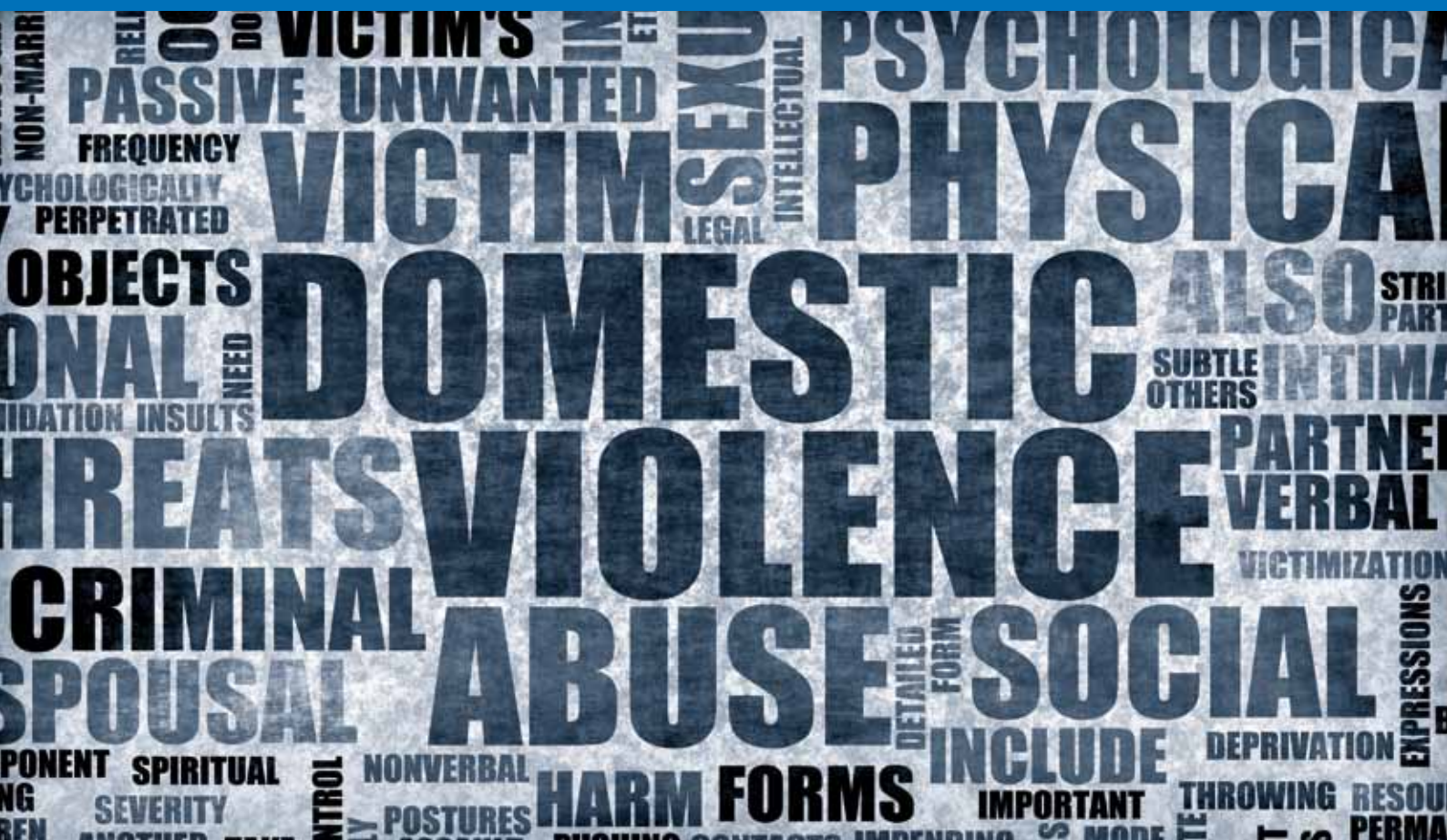


TIIG Merseyside and Cheshire Themed Report

Assaults in the home across Merseyside and Cheshire
(2011/12 to 2012/13)

April 2014



Jennifer Brizell, Mark Whitfield
Centre for Public Health
Research Directorate
Faculty of Education, Health and Community
Liverpool John Moores University
Henry Cotton Campus
15-21 Webster Street
Liverpool
L3 2ET

CONTENTS

Foreword	3
Key findings	4
Data from Accident and Emergency Departments (ED)	5
EDs in Merseyside and Cheshire.....	5
Enhanced assault data collection	5
Limitations of ED data and recommendations for improvement.....	6
Assaults in the home in Merseyside and Cheshire; an analysis of ED data	8
Demographics.....	8
Source of Referral.....	13
Arrival Mode.....	14
Discharge Method	14
Assault in the home attendances at local authority level	15
All attendances	15
All assault in the home attendances by Ward and LA boundaries	16
Liverpool resident assault in the home attendances by Ward and LA boundaries	17
Wirral resident assault in the home attendances by Ward and LA boundaries	18
Sefton resident assault in the home attendances by Ward and LA boundaries.....	19
Knowsley resident assault in the home attendances by Ward and LA boundaries.....	20
Cheshire West and Chester resident assault in the home attendances by Ward and LA boundaries.....	21
Cheshire East resident assault in the home attendances by Ward and LA boundaries.....	22
Assault in the home attendances at ED level	23
The Royal Liverpool University Hospital	24
The Royal Liverpool University Hospital assault in the home attendances by Ward and LA boundaries.....	24
University Hospital Aintree assault in the home attendances by Ward and LA boundaries	25
Arrowe Park Hospital assault in the home attendances by Ward and LA boundaries	26
Leighton Hospital assault in the home attendances by Ward and LA boundaries	27
The Countess of Chester Hospital assault in the home attendances by Ward and LA boundaries	28
Southport and Formby District General Hospital assault in the home attendances by Ward and LA boundaries.....	29

Macclesfield District General Hospital assault in the home attendances by Ward and LA boundaries	30
Alder Hey Children’s NHS Hospital assault in the home attendances by Ward and LA boundaries.....	31
Appendix 1.....	32
Appendix 2.....	38
Liverpool local authority ward map.....	38
Wirral local authority ward map.....	39
Sefton local authority ward map	40
Knowsley local authority ward map	41
Cheshire West and Chester local authority ward map	42
Cheshire East local authority ward map	43

FOREWORD



Assaults in the home are an important public health issue, affecting both the physical and mental health of the victims and those around them. In 2012, the North West Public Health Observatory report on violence emphasised the preventable nature of violence through reducing risk factors and promoting protective factors over the life course.

Research shows that violence requiring medical treatment often goes unreported to the police, and so this report provides a vital piece of evidence relating to the true extent of the assaults in the home.

I hope that this report will help all those working in the field of violence prevention to take action to reduce assaults in the home.

Matthew Ashton

A handwritten signature in black ink, consisting of the letters 'M' and 'A' followed by a stylized flourish.

Director of Public Health in Knowsley

Lead DPH for Public Health Intelligence in Cheshire & Merseyside

ACKNOWLEDGEMENTS

With thanks to the A&E departments involved for their collection of this data and the Merseyside & Cheshire Public Health Teams for their comments and contributions. Thanks also to Karen Critchley and Stuart Cole for their help in proofing this report.

KEY FINDINGS

Between April 2011 and March 2013, there were 3,511 assault in the home attendances to a Merseyside or Cheshire Emergency department (ED). Of these, 3,218 (92%) were made by Merseyside and Cheshire residents.

- The majority of Merseyside and Cheshire resident attendances went to The Royal Liverpool University Hospital (872) and University Hospital Aintree (857).
- The largest number of attendances came from residents living in Liverpool (1,172), Wirral (534) and Sefton (512).
- When looking at the crude rate (per 100,000), the highest proportion of attendances came from Liverpool (249.5), Sefton (187.1) and Wirral (166.8). Crude rates could not be calculated for all local authorities due to missing data.
- The highest number of attendances came from wards Tuebrook (92), Kensington (89), County (72), Warbreck (68) and Birkenhead (67). All with the exception of Birkenhead are in the Liverpool local authority; Birkenhead is located on the Wirral.
- There were more male (1,724) than female attendances (1,494).
- The highest proportion of attendances were aged between 30 and 59 (1,641) and 15 to 29 years (1,309).
- The majority of patients were of White ethnicity (1,397).
- Most patients arrived at ED by ambulance (1,694).
- Most often patients self-referred (2,246).
- Only 441 patients were admitted into hospital and 1,654 were discharged.

DATA FROM ACCIDENT AND EMERGENCY DEPARTMENTS (ED)

EDS IN MERSEYSIDE AND CHESHIRE

Within Merseyside, there are six accident and emergency departments (ED). These are; University Hospital Aintree, Alder Hey Children's NHS Hospital, The Royal Liverpool University Hospital, Arrows Park Hospital, Southport and Formby District General Hospital and Whiston Hospital. Within Cheshire, there are four EDs which are Macclesfield District General Hospital, Leighton Hospital, Countess of Chester Hospital and Warrington Hospital.

All EDs across Merseyside and Cheshire collect information on whether an injury was an assault. However Whiston Hospital does not collect data on the location of an assault so data from this hospital has been omitted. At the time of reporting the Trauma and Injury Intelligence Group (TIIG) did not hold data from Warrington Hospital - therefore this hospital has also been omitted.

Each ED collects and codes their data in a different way. TIIG have defined an assault as an injury group falling in one of the following categories; Assault, Domestic assault, Firearm, Stab and Trauma assault¹. To identify home assaults TIIG has used the generic incident location field provided by each ED and selected only those assaults occurring in the home.

Generally, assaults are self-reported by patients when attending A&E and questions relating to the assault are usually asked at the reception desk. It is therefore recognised that not all patients may report that they have been assaulted and figures presented in this report may not present the complete picture of assaults occurring in Merseyside and Cheshire.

In order to support local work this report describes data split both at local authority level and ED level to assist local partners in their work structured around the Public Health Outcome Framework (PHOF). In particular this report can be used in work carried out into domestic abuse and violent crime.

ENHANCED ASSAULT DATA COLLECTION

Across Merseyside and Cheshire and in line with The College of Emergency Medicine guidelines, a number of EDs collect additional information from patients who present at A&E after having been assaulted. The hospitals which collect varying levels of this information are Arrows Park Hospital, University Hospital Aintree, Royal Liverpool University Hospital, Southport and Formby District General Hospital and Countess of Chester Hospital². Where collected, information relating to the weapon used in the assault, the number of attackers, the gender of attackers and relationship to attackers is also provided. Only four EDs in Merseyside and Cheshire provided a detailed description of

¹ Injury groups reflect the way in which A&Es code and name their data, these categories are all classified as assaults.

² At present, the quality of the enhanced assault data collected at The Countess of Chester Hospital is not at a level needed for inclusion in analysis. Therefore this information has been omitted.

the location of the assault. However as all assaults in this report took place in the home it is possible to provide the location of assault at ward level (using residence of patients details). Table 1 provides a detailed description of which EDs collect enhanced assault data. Where collected, enhanced assault data is provided in the individual ED sections; these sections assist in reviewing not only whether particular data items are collected but also how well they are collected.

LIMITATIONS OF ED DATA AND RECOMMENDATIONS FOR IMPROVEMENT

The data included within this report does have a number of limitations and caution should be applied when using figures provided. Therefore, this report comes with a number of caveats:

- 1) As data from Warrington A&E and Whiston A&E is excluded, this report does not reflect a true picture of assault in the home attendances made by Merseyside and Cheshire residents. Figures from residents of Knowsley, Warrington and Halton will be particularly affected.
- 2) Assaults are self-reported and some patients may not disclose information at A&E as to how they have become injured. Data can however be used in conjunction with other data sources, e.g. police data.
- 3) As the North West ambulance service (NWAS) data does not include a general location of where an assault took place, data from NWAS has not been included in this report.
- 4) Where enhanced data (e.g. assault location, attacker details, whether alcohol was involved) pertaining to an assault has been collected, this information has been included within this report. However, this information is collected at differing levels of quality across the EDs.

Over the financial year 2014/15, with support from local partners in public health and community safety, TIIG will be working with each ED across Merseyside and Cheshire to look at the feasibility of them collecting enhanced data around assaults. For those EDs who are already collecting this information, TIIG will be working with them through ED events, training, completion rate feedback and reports to look to share expertise and improve data quality where needed. A key focus of 2014/15 will be in improving data quality particularly in those attendances which are linked to violence and alcohol.

TABLE 1. MERSEYSIDE AND CHESHIRE ENHANCED ASSAULT DATA COLLECTION

Emergency Department	Assault date/time			Assault location		Weapon		Alcohol		Attacker info			Police			
	Incident date	Incident time	Exact/estimate (date/time)	Time since incident	Assault location	Assault location details	Weapon	Weapon details	Alcohol consumed	Location last drink	Location last drink detail	Number of attackers	Gender of attacker	Relation to attacker	Attacker - other relation	Incident reported to police
Southport District General Hospital	N	N	N	Y	Y	Y	Y	N	CAF	Y	Y	Y	Y	Y	Y	Y
Arrowe Park Hospital	Y	Y	N	CAF	Y	Y	Y	Y	Y	Y	Y	Y	N	Y	Y	Y
University Hospital Aintree	Y	Y	N	N	N	N	N	N	N	N	N	N	N	N	N	N
Alder Hey Children's Hospital	N	N	N	N	N	N	N	N	N	N	N	N	N	N	N	N
Royal Liverpool University Hospital	Y	Y	CAF	CAF	Y	Y	Y	Y	Y	Y	Y	N	N	Y	N	N
Whiston Hospital	N	N	N	N	N	N	N	N	N	N	N	N	N	N	N	N
Leighton Hospital	Y	Y	N	N	N	N	N	N	N	N	N	N	N	N	N	N
Macclesfield District General Hospital	N	N	N	N	N	N	N	N	N	N	N	N	N	N	N	N
Warrington Hospital (TBC)	TBC	TBC	TBC	TBC	TBC	TBC	TBC	TBC	TBC	TBC	TBC	TBC	TBC	TBC	TBC	TBC
Countess of Chester Hospital	N	N	N	N	Y	Y	N	N	N	N	Y	N	N	Y	N	N

Y=Collected, N=Not collected
CAF = Collected in another field
TBC = To be confirmed

ASSAULTS IN THE HOME IN MERSEYSIDE AND CHESHIRE; AN ANALYSIS OF ED DATA

This report examines assaults in the home in Merseyside and Cheshire using ED data between April 2011 and March 2013. The two most recent full financial years have been provided to allow the identification of trends and also to enable ward level analysis in later sections of this report.

DEMOGRAPHICS

Between April 2011 to March 2013, 3,511 attendances were recorded as assaults occurring in the home across Merseyside and Cheshire EDs (Table 2).

TABLE 2. ASSAULTS IN THE HOME TO MERSEYSIDE AND CHESHIRE EDS (APRIL 2011 TO MARCH 2013)

Month/Year	Apr	May	Jun	Jul	Aug	Sep	Oct	Nov	Dec	Jan	Feb	Mar	Total
2011/12	147	177	178	178	173	137	172	161	161	123	112	160	1879
2012/13	158	172	145	142	153	128	123	117	126	138	125	105	1632
Total	305	349	323	320	326	265	295	278	287	261	237	265	3511

On the whole, assault in the home attendances decreased over the two year period. The proportion of assaults in the home taking place in each month (against the total for the financial year) shows that generally there is a relatively even spread with no one particular month or season showing a significant spike against other months. May to August however does show a slighter higher proportion of attendances for assault in the home than other months in the same financial year (Figure 1).

FIGURE 1. MERSEYSIDE AND CHESHIRE ASSAULT IN THE HOME ATTENDANCES BY MONTH (APRIL 2011 TO MARCH 2013)

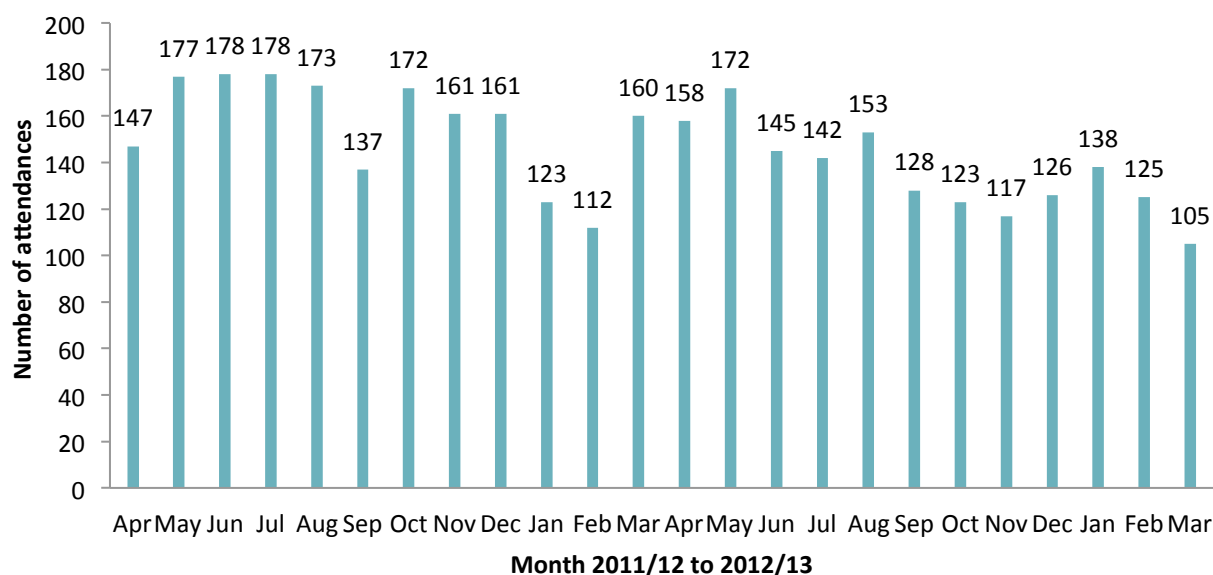


Table 3 shows the breakdown of assault in the home attendances by ED attended. The Royal Liverpool University Hospital saw the most attendances for assaults in the home (930) compared to Alder Hey Children’s NHS Hospital which only saw 57 attendances.

TABLE 3. MERSEYSIDE AND CHESHIRE ASSAULTS IN THE HOME BY MERSEYSIDE AND CHESHIRE ED (APRIL 2011 TO MARCH 2013)

ED	Attendances
Royal Liverpool University Hospital	930
University Hospital Aintree	882
Arrowe Park Hospital	509
Leighton Hospital	472
Countess of Chester Hospital	362
Southport District General Hospital	219
Macclesfield District General Hospital	80
Alder Hey Children’s NHS Hospital	57
Total	3511

Across the 3,511 assault in the home attendances made to Merseyside and Cheshire EDs between April 2011 and March 2013, 3,218 (92%) were made by Merseyside and Cheshire residents. The highest out of region attendances came from West Lancashire (87; 2%), Flintshire (65; 2%) and Stoke-on-Trent (15; <1%). The remainder of this report focuses on Merseyside and Cheshire residents only. Table 4 shows the breakdown of Merseyside and Cheshire resident attendances by local authority. The majority of attendances came from

Liverpool (1,172; 36%), Wirral (534; 17%) and Sefton (512; 16%) local authorities. There were a very small number of assault in the home attendances recorded for those from Knowsley (169), St Helens (10), Halton (9) and Warrington (7). This is due to the exclusion of data from Whiston Hospital and Warrington Hospital. Table 4 also provides crude rates (per 100,000) for each local authority. Due to omission of data from Whiston and Warrington Hospitals crude rates have not been provided for Knowsley, St Helens, Halton and Warrington.

TABLE 4. MERSEYSIDE AND CHESHIRE RESIDENTS ASSAULTS IN THE HOME BY LOCAL AUTHORITY (APRIL 2011 TO MARCH 2013)

Local authority	Attendances	Rate (per 100,000)	95% CI (lower)	95% CI (upper)
Liverpool	1172	249.5	235.4	264.2
Wirral	534	166.8	152.9	181.5
Sefton	512	187.1	171.2	204.0
Cheshire East	410	110.2	99.8	121.4
Cheshire West and Chester	395	119.6	108.1	132.0
Knowsley	169	N/A	N/A	N/A
St. Helens	10	N/A	N/A	N/A
Halton	9	N/A	N/A	N/A
Warrington	7	N/A	N/A	N/A
Total	3218	-	-	-

Table 5 shows the breakdown of attendances by local authority and which ED was attended by assault in the home patients. Many attendees went to an ED in the local authority they lived; for example 771 of Liverpool residents attended the Royal Liverpool University Hospital (66%) and 499 of Wirral residents attended Arrowe Park Hospital (93%).

TABLE 5. MERSEYSIDE AND CHESHIRE RESIDENTS ASSAULTS IN THE HOME BY ED AND LOCAL AUTHORITY (APRIL 2011 TO MARCH 2013)³

	Liverpool	Wirral	Sefton	Cheshire East	Cheshire West and Chester	Knowsley	St. Helens	Halton	Warrington	Merseyside total	Cheshire total	Total
Arrowe Park Hospital	***	499	0	0	8	***	0	0	0	501	8	509
The Royal Liverpool University Hospital	771	16	30	5	***	35	***	6	***	856	16	872
University Hospital Aintree	350	10	350	***	***	130	5	***	<6	845	12	857
Leighton Hospital	0	0	0	330	<110	0	0	***	0	0	439	439
Countess of Chester Hospital	***	<10	***	***	271	0	0	0	0	10	274	284
Southport and Formby District General Hospital	***	0	126	0	0	0	***	0	0	129	0	129
Macclesfield District General Hospital	0	0	0	<70	***	0	0	0	0	***	<71	71
Alder Hey Children's NHS Hospital	47	***	<6	0	0	***	0	***	0	<57	***	57
Total	1172	534	512	410	395	169	10	9	7	2397	821	3218

Assault in the home attendances made up approximately 1% of all injury ED attendances made across Merseyside and Cheshire and around 12% of all assault attendances. In the financial year 2011/12 there were 1,714 assault in the home attendances made by Merseyside and Cheshire residents to Merseyside and Cheshire EDs. In 2012/13 this number had decreased to 1,504 (12% decrease). There were slightly more male (1,724; 54%) assault in the home attendances than female (1,494; 46%), (Figure 2).

³ Please note throughout this report all numbers less than five have been suppressed in line with patient confidentiality and if there is only one number less than five in a category then a second number will be suppressed at the next level in order to prevent back calculations from totals.

FIGURE 2. MERSEYSIDE AND CHESHIRE ASSAULT IN THE HOME ATTENDANCES BY GENDER (APRIL 2011 TO MARCH 2013)

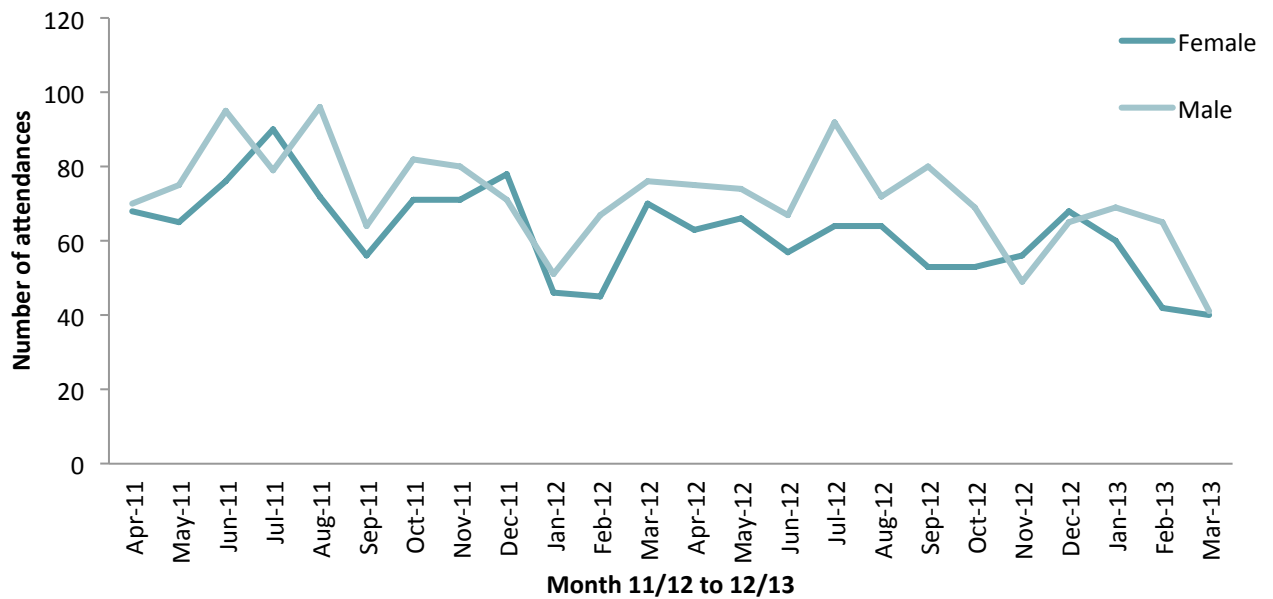


Figure 3 shows the percentage of assault in the home attendances from each age group. The highest proportion of injury attendances was from the 30-59 (1,641; 51%) and 15-29 (1,309; 41%) age groups.

FIGURE 3. MERSEYSIDE AND CHESHIRE ASSAULT IN THE HOME ATTENDANCES BY AGE GROUP (APRIL 2011 TO MARCH 2013)

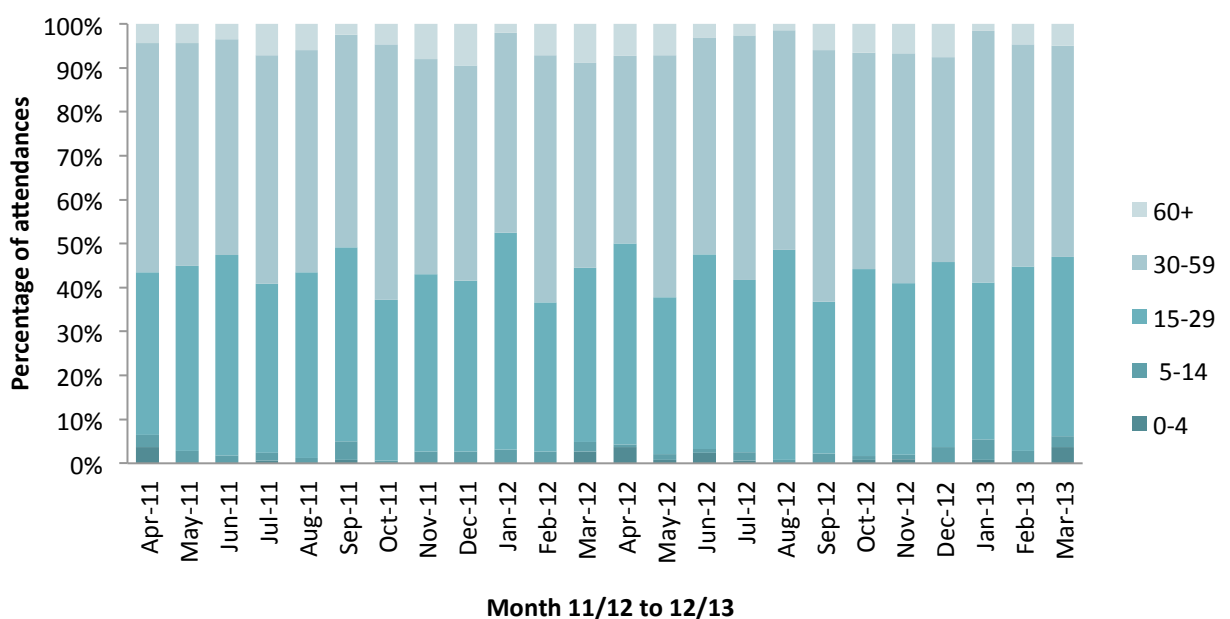
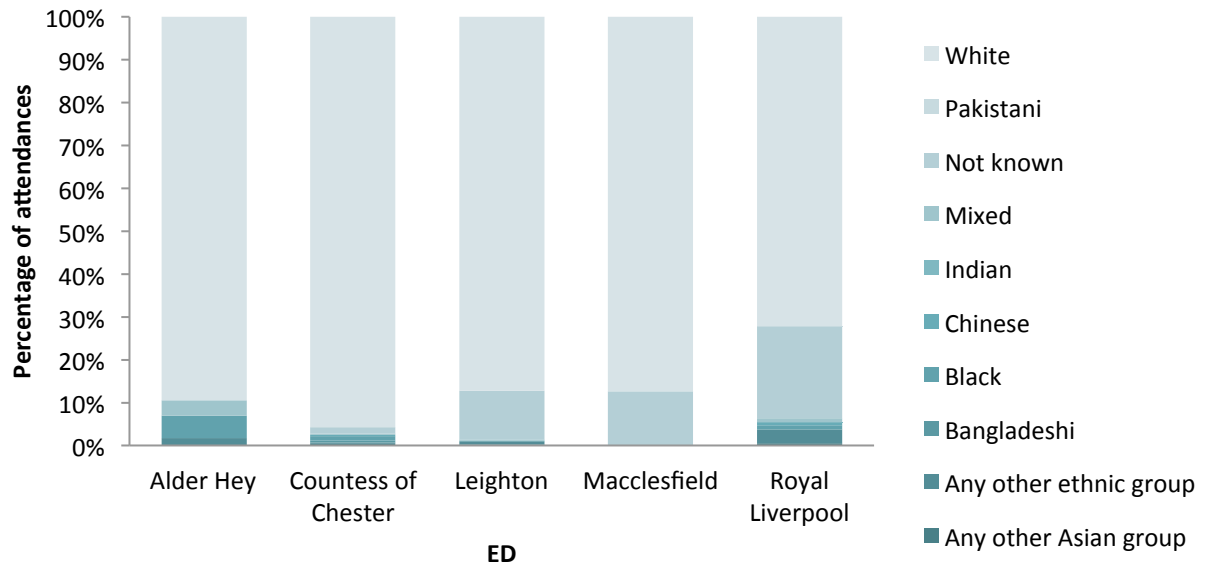


Figure 4 shows the ethnicity of assault in the home attendances by ED. For those EDs who collect ethnicity, over four in five (1,397; 81%) of attendees were White. Three EDs do not collect ethnicity; University Hospital

Aintree, Arrowe Park Hospital and Southport and Formby District General Hospital. In those EDs that did collect ethnicity, 250 attendances did not have an ethnicity recorded.

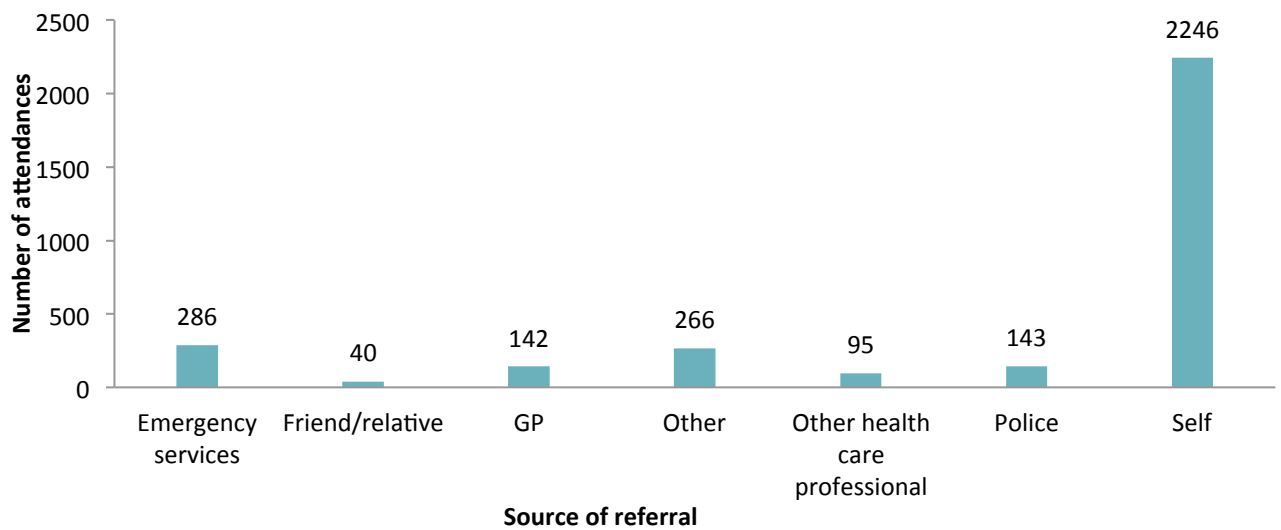
FIGURE 4. MERSEYSIDE AND CHESHIRE ASSAULT IN THE HOME ATTENDANCES BY ETHNICITY (APRIL 2011 TO MARCH 2013)



SOURCE OF REFERRAL

Figure 5 shows the source of referral for assault in the home attendances in Merseyside and Cheshire. The majority of attendees (2,246; 70%) self-referred.

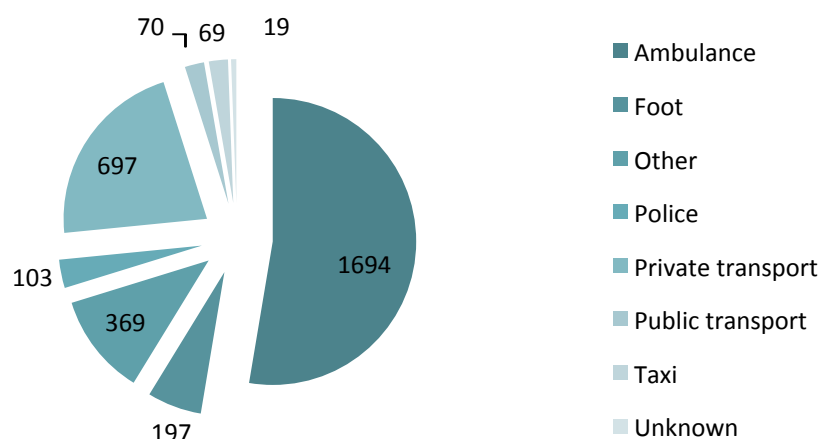
FIGURE 5. MERSEYSIDE AND CHESHIRE ASSAULT IN THE HOME ATTENDANCES BY SOURCE OF REFERRAL (APRIL 2011 TO MARCH 2013)



ARRIVAL MODE

Figure 6 shows the arrival mode for assault in the home attendances in Merseyside and Cheshire. Between April 2011 and March 2013, the majority of attendees (1,694; 53%) arrived by ambulance and over two in ten arrived by private transport (697; 22%).

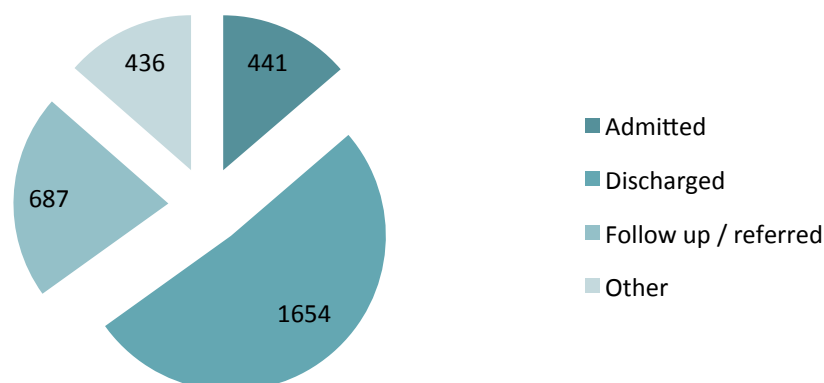
FIGURE 6. MERSEYSIDE AND CHESHIRE ASSAULT IN THE HOME ATTENDANCES BY ARRIVAL MODE (APRIL 2011 TO MARCH 2013)



DISCHARGE METHOD

The disposal of a patient from an ED gives an indication of the severity of the injuries. Between April 2011 and March 2013, the majority of patients were discharged (1,654; 51%). Only 441 (14%) of patients were admitted into hospital following being assaulted at home (Figure 7).

FIGURE 7. MERSEYSIDE AND CHESHIRE ASSAULT IN THE HOME ATTENDANCES BY DISCHARGE METHOD (APRIL 2011 TO MARCH 2013)



ASSAULT IN THE HOME ATTENDANCES AT LOCAL AUTHORITY LEVEL⁴

ALL ATTENDANCES

The following section describes attendances to Merseyside and Cheshire EDs at a local authority and ward level. Please see Table 6 for the top 20 ward attendances⁵ for patients presenting at an ED after being assaulted at home. A large proportion of the top attendances came from Liverpool.

TABLE 6. MERSEYSIDE AND CHESHIRE RESIDENTS ASSAULTS IN THE HOME ATTENDANCES BY TOP TWENTY WARDS (APRIL 2011 TO MARCH 2013)

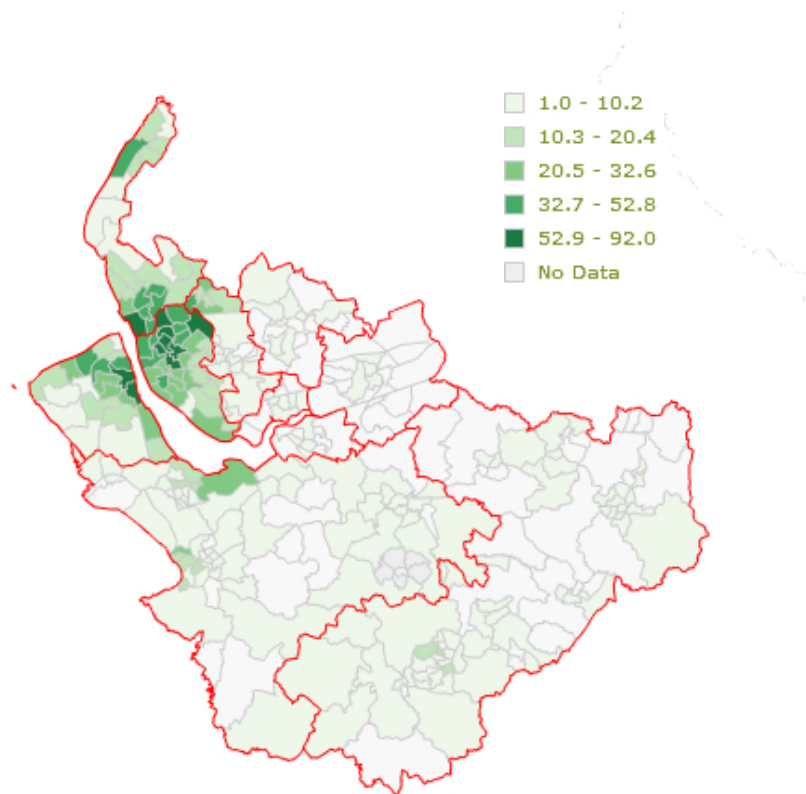
Ward Name	Ward Code	Local Authority	Number of attendances
Tuebrook	00BYGF	Liverpool	92
Kensington	00BYFW	Liverpool	89
County	00BYFL	Liverpool	72
Warbreck	00BYGJ	Liverpool	68
Birkenhead	00CBFC	Wirral	67
Linacre	00CAGL	Sefton	64
Anfield	00BYFD	Liverpool	60
Tranmere	00CBFW	Wirral	58
Breckfield	00BYFF	Liverpool	57
Gillmoss	00BYFS	Liverpool	53
Melrose	00BYFT	Liverpool	52
Granby	00BYFX	Liverpool	52
Pirrie	00BYGB	Liverpool	50
Ford	00CAGH	Sefton	50
Fazakerley	00BYFR	Liverpool	46
St Oswald	00CAGW	Sefton	45
Seacombe	00CBFT	Wirral	40
Derby	00CAGF	Sefton	40
Everton	00BYFQ	Liverpool	40
Netherton and Orrell	00CAGR	Sefton	40

⁴ Please note, due to low numbers and the exclusion of data from Warrington ED and Whiston ED it is not possible to provide local authority descriptions for St Helens, Halton and Warrington.

⁵ A full ward breakdown is available in Appendix 1.

The map⁶ below shows Merseyside and Cheshire resident assault in the home attendances who attended an ED in Merseyside and Cheshire between April 2011 and March 2013.

ALL ASSAULT IN THE HOME ATTENDANCES BY WARD AND LA BOUNDARIES



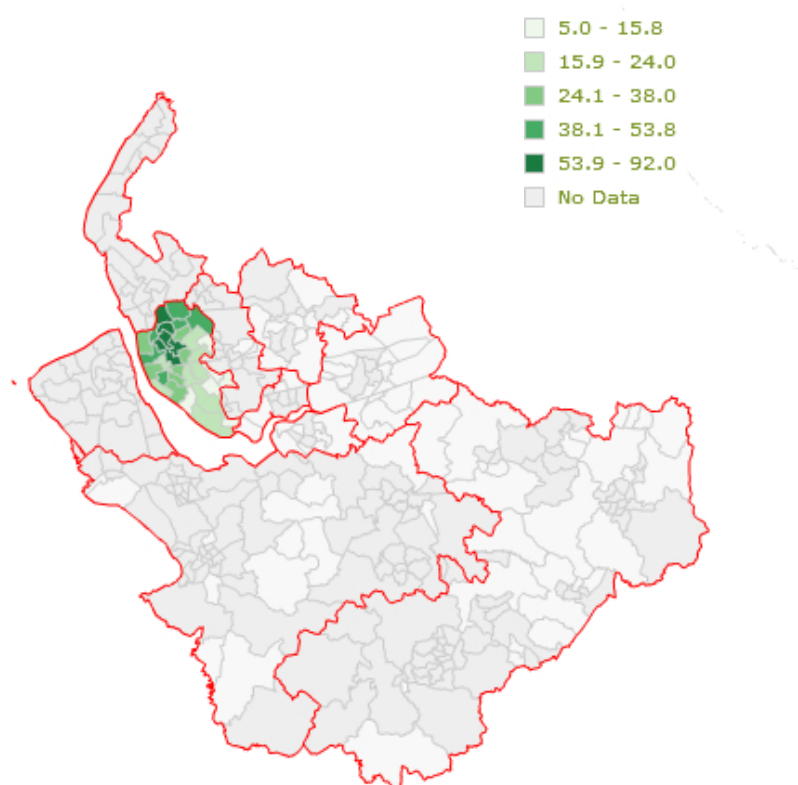
© Copyright

⁶ Zoomed individual local authority maps are available in Appendix 2.

LIVERPOOL

The number of assault in the home attendances made by Liverpool residents to Merseyside and Cheshire EDs between April 2011 and March 2013 was 1,172. This figure represented 36% of the total number of assault in the home attendances made by Merseyside and Cheshire residents. Males made up 58% of Liverpool resident attendances (674) and those aged between 15-29 years and 30-59 years accounted for 40% (471) and 53% (616) respectively. In 2011/12 there were 630 assault in the home attendances, in 2012/13 this had dropped by 14% to 542 attendances. This decrease was most pronounced in males (15% decrease) however there was also a drop in the number of female attendances between 2011/12 and 2012/13 (13% decrease). Similarly all age groups saw a decrease between 2011/12 and 2012/13 with the exception of 0 to 4 year olds (133% increase)⁷ Within Liverpool, the highest number of attendances came from the wards Tuebrook (92), Kensington (89), County (72), Warbreck (68) and Anfield (60). The map below shows Liverpool resident assault in the home attendances who attended an ED in Merseyside and Cheshire between April 2011 and March 2013.

LIVERPOOL RESIDENT ASSAULT IN THE HOME ATTENDANCES BY WARD AND LA BOUNDARIES



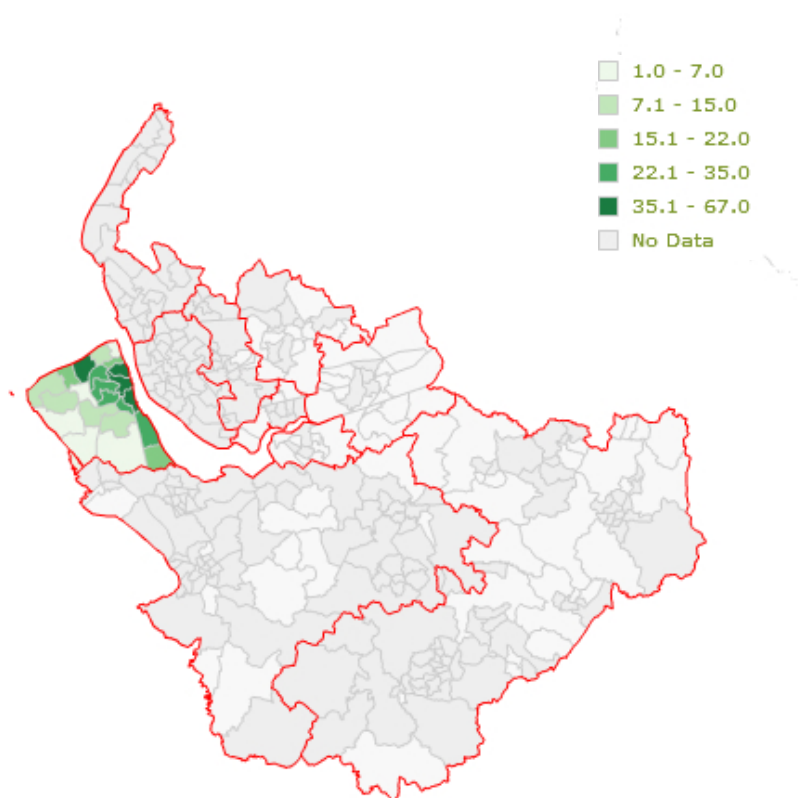
© Copyright

⁷ Please note this reflects a very small number of patients.

WIRRAL

The number of assault in the home attendances made by Wirral residents to Merseyside and Cheshire EDs between April 2011 and March 2013 was 534. This figure represented 17% of the total number of assault in the home attendances made by Merseyside and Cheshire residents. Females made up 56% of Wirral resident attendances (297) and those aged between 15-29 years and 30-59 years accounted for 39% (210) and 53% (283) respectively. In 2011/12 there were 284 assault in the home attendances. In 2012/13 this had dropped by 12% to 250 attendances. This decrease was most pronounced in females (18% decrease); however there was also a small drop in the number of male attendances between 2011/12 and 2012/13 (4% decrease). Similarly all age groups saw a decrease between 2011/12 and 2012/13 with the exception of 0 to 4 year olds (50% increase) and 5 to 14 year olds (200% increase)⁸. Within Wirral, the highest number of attendances came from the wards Birkenhead (67), Tranmere (58), Seacombe (40), Leasowe (37) and Bidston (35). The map below shows Wirral resident assault in the home attendances who attended an ED in Merseyside and Cheshire between April 2011 and March 2013.

WIRRAL RESIDENT ASSAULT IN THE HOME ATTENDANCES BY WARD AND LA BOUNDARIES



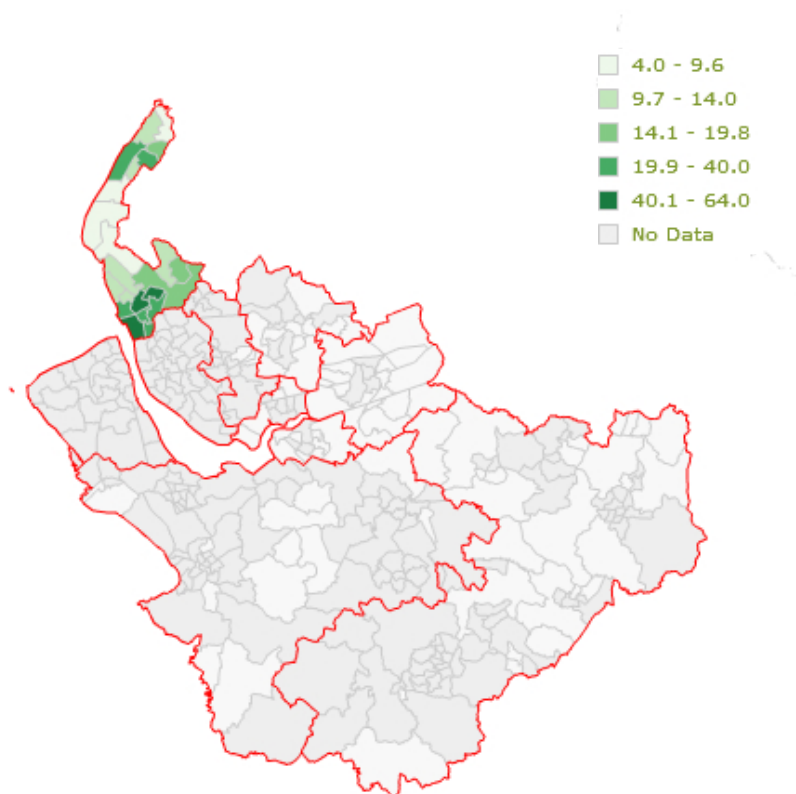
© Copyright

⁸ Please note for both 0 to 4 and 5 to 14 year olds this reflects a very small number of patients.

SEFTON

The number of assault in the home attendances made by Sefton residents to Merseyside and Cheshire EDs between April 2011 and March 2013 was 512. This figure represented 16% of the total number of assault in the home attendances made by Merseyside and Cheshire residents. Males made up 55% of Sefton resident attendances (282) and those aged between 15-29 years and 30-59 years accounted for 38% (194) and 54% (279) respectively. In 2011/12 there were 273 assault in the home attendances. In 2012/13 this had dropped by 12% to 239 attendances. This decrease was most pronounced in females (20% decrease); however there was also a small drop in the number of male attendances between 2011/12 and 2012/13 (6% decrease). All age groups saw a decrease between 2011/12 and 2012/13. Within Sefton, the highest number of attendances came from the wards Linacre (64), Ford (50), St Oswald (45), Netherton and Orrell (40) and Derby (40). The map below shows Sefton resident assault in the home attendances who attended an ED in Merseyside and Cheshire between April 2011 and March 2013.

SEFTON RESIDENT ASSAULT IN THE HOME ATTENDANCES BY WARD AND LA BOUNDARIES

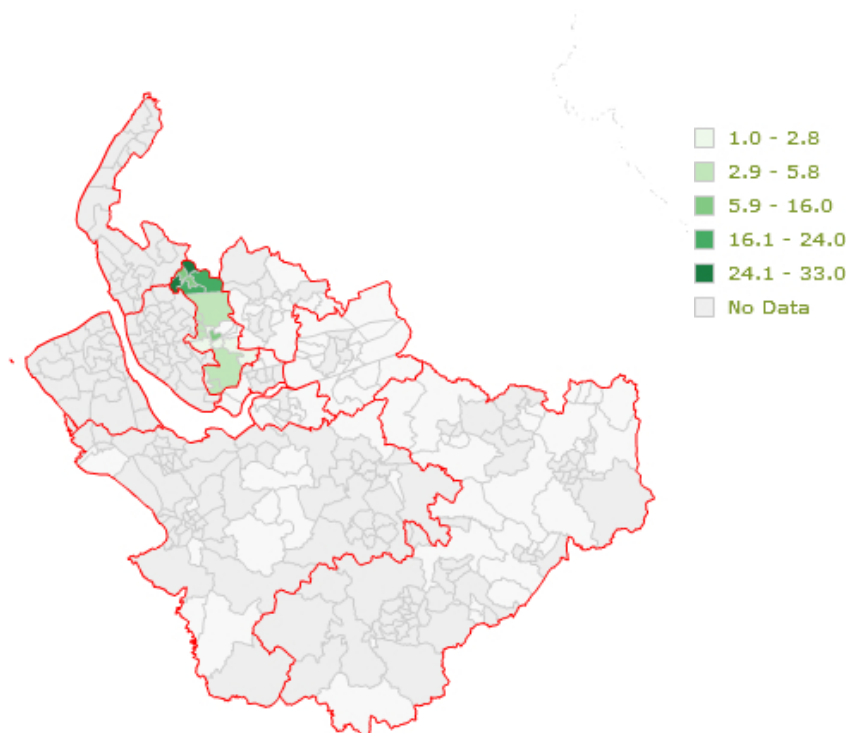


© Copyright

KNOWSLEY

The number of assault in the home attendances made by Knowsley residents to Merseyside and Cheshire EDs between April 2011 and March 2013 was 169⁹. This figure represented 5% of the total number of assault in the home attendances made by Merseyside and Cheshire residents. Males made up 53% of Knowsley resident attendances (89) and those aged between 15-29 and 30-59 years accounted for 46% (78) and 49% (82) respectively. In 2011/12 there were 86 assault in the home attendances. In 2012/13 this had dropped by 3% to 83 attendances, a decrease most pronounced in females (10%) with a small increase in the number of male attendances between 2011/12 and 2012/13 (2% increase). Age groups which saw a decrease between 2011/12 and 2012/13 were 0-4 year olds (100% decrease) and 30 to 59 year olds (14%). There was a slight increase in attendances aged between 15 and 29 years old between 2011/12 to 2012/13 (5% increase) and those aged 5 to 14 year olds also saw an increase (200%)¹⁰. Within Knowsley, the highest number of attendances came from the wards Whitefield (33), Tower Hill (26), Cherryfield (21), Northwood (20) and Kirkby Central (15). The map below shows Knowsley resident assault in the home attendances who attended an ED in Merseyside and Cheshire between April 2011 and March 2013.

KNOWSLEY RESIDENT ASSAULT IN THE HOME ATTENDANCES BY WARD AND LA BOUNDARIES



© Copyright

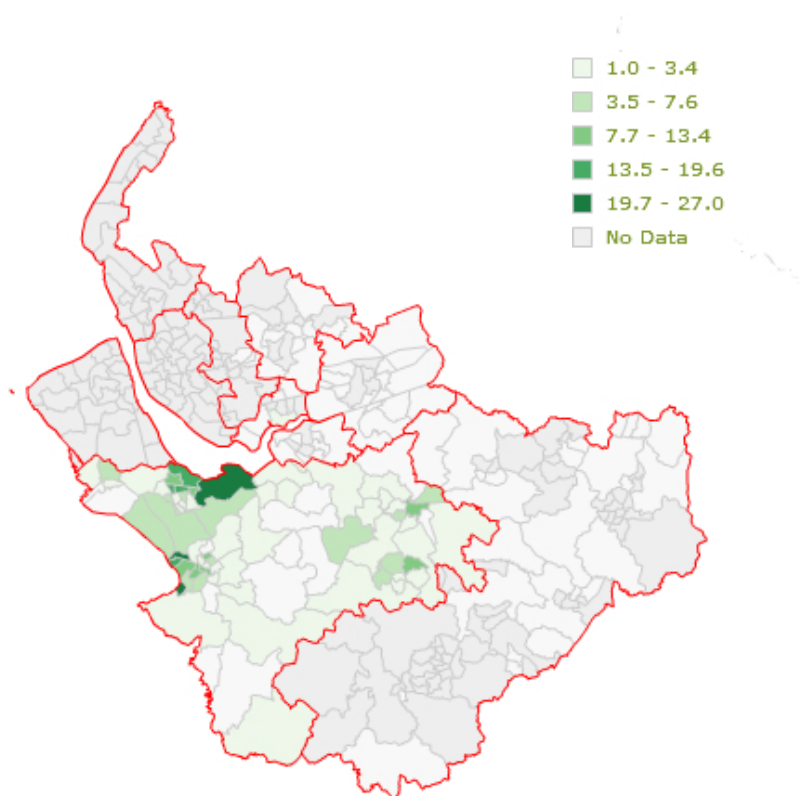
⁹ Please note, the number of attendances for Knowsley residents is likely to be underrepresented due to the omission of data from Whiston ED.

¹⁰ Please note many of these percentages reflect very small attendances numbers.

CHESHIRE WEST AND CHESTER

The number of assault in the home attendances made by Cheshire West and Chester residents to Merseyside and Cheshire EDs between April 2011 and March 2013 was 395. This figure represented 12% of the total number of assault in the home attendances made by Merseyside and Cheshire residents. Males made up 51% of Cheshire West and Chester resident attendances (201) and those aged between 15-29 years and 30-59 years accounted for 41% (160) and 50% (197) respectively. In 2011/12 there were 226 assault in the home attendances. In 2012/13 this had dropped by 25% to 169 attendances. This decrease was most pronounced in females (33% decrease); however there was also a drop in the number of male attendances between 2011/12 and 2012/13 (17% decrease). All age groups saw a decrease in attendances between 2011/12 and 2012/13. Within Cheshire West and Cheshire, the highest number of attendances came from the wards Stanlow and Wolverham (27), Blacon Hall (25), Lache Park (20), Grange (19) and Westminster (17). The map below shows Cheshire West and Chester resident assault in the home attendances who attended an ED in Merseyside and Cheshire between April 2011 and March 2013.

CHESHIRE WEST AND CHESTER RESIDENT ASSAULT IN THE HOME ATTENDANCES BY WARD AND LA BOUNDARIES

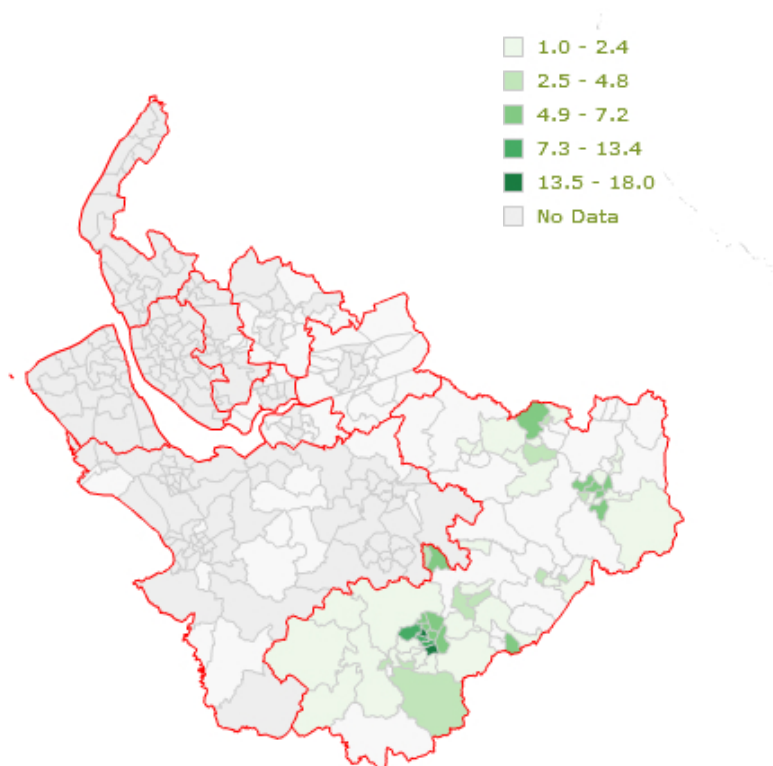


© Copyright

CHESHIRE EAST

The number of assault in the home attendances made by Cheshire East residents to Merseyside and Cheshire EDs between April 2011 and March 2013 was 410. This figure represented 13% of the total number of assault in the home attendances made by Merseyside and Cheshire residents. Males made up 54% of Cheshire East resident attendances (222) and those aged between 30-59 years and 15-29 years accounted for 42% (173) and 45% (183) respectively. In 2011/12 there were 203 assault in the home attendances, in 2012/13 this had increased slightly by 2% to 207 attendances. Females saw an increase in numbers between 2011/12 to 2012/13 (11% increase) whereas males saw a decrease in numbers between 2011/12 and 2012/13 (5%). Age groups figures stayed fairly similar between the two years with 30 to 59 year olds showing a small increase (6%). Within Cheshire East¹¹, the highest number of attendances came from the wards Grosvenor (18), Alexandra (15), St Barnabas (11), St John's (8) and Valley (8). The map below shows Cheshire East resident assault in the home attendances who attended an ED in Merseyside and Cheshire between April 2011 and March 2013.

CHESHIRE EAST RESIDENT ASSAULT IN THE HOME ATTENDANCES BY WARD AND LA BOUNDARIES



© Copyright

¹¹ Please note for a large proportion of Leighton ED data it was not possible to map to ward level due to Leighton ED providing the first part of the postcode only.

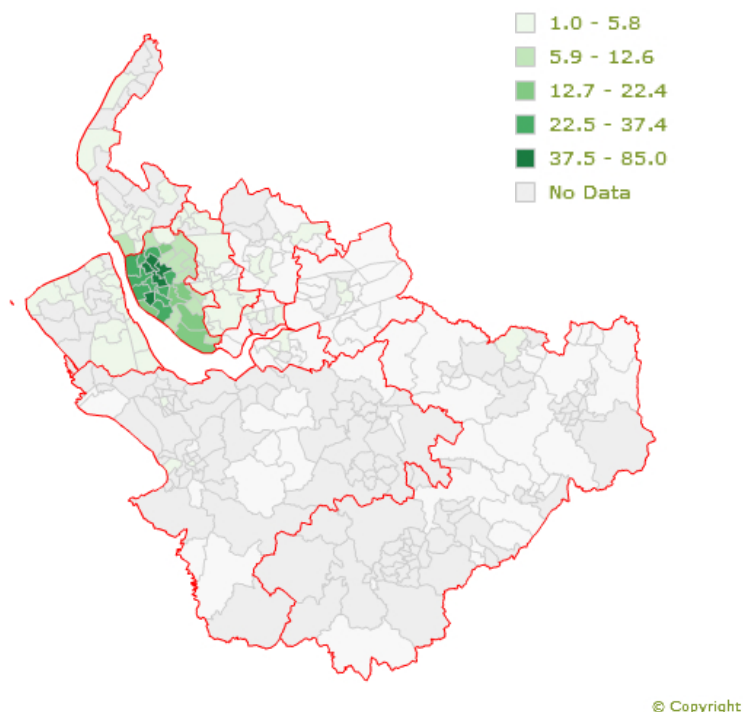
ASSAULT IN THE HOME ATTENDANCES AT ED LEVEL

The following section describes attendances to Merseyside and Cheshire EDs by Merseyside and Cheshire residents at ED level. Where an ED collects additional information pertaining to an assault this is also provided; see Table 1 for a breakdown of the level of information collected by each ED.

THE ROYAL LIVERPOOL UNIVERSITY HOSPITAL

Between April 2011 and March 2013, The Royal Liverpool University Hospital (RLUH) saw 872 assault in the home attendances made by Merseyside and Cheshire residents. This represented 27% of assault in the home attendances made by Merseyside and Cheshire residents. The majority of attendees were male (534; 61%) and were aged between 30-59 years (472; 54%) and 15-29 years (368; 42%). RLUH collects additional information from patients presenting at A&E who have been assaulted; this includes the patient's relationship to attacker and weapon of assault. RLUH also collects a detailed location of assault. However as this report is only looking at patients who were assaulted at home, information on the location of assault can be derived from the patient's residence and accordingly does not need to be provided separately. Where collected (132 patients), the majority of attendances were assaulted by a stranger (41; 31%), acquaintance/friend (33; 25%) or partner (22; 17%). Again, where collected (132 patients) the majority of patients were assaulted with a body part (71%), 7% with a blunt object (9) and 4% with a knife (5). One in five patients had consumed alcohol (27; 20%) prior to being assaulted and in the majority of cases (16; 59%) the alcohol had been consumed at home. The highest number of attendances to RLUH came from the wards Kensington (85), Tuebrook (80), Breckfield (51), Granby (50) and Anfield (47). The map below shows RLUH assault in the home attendances between April 2011 and March 2013.

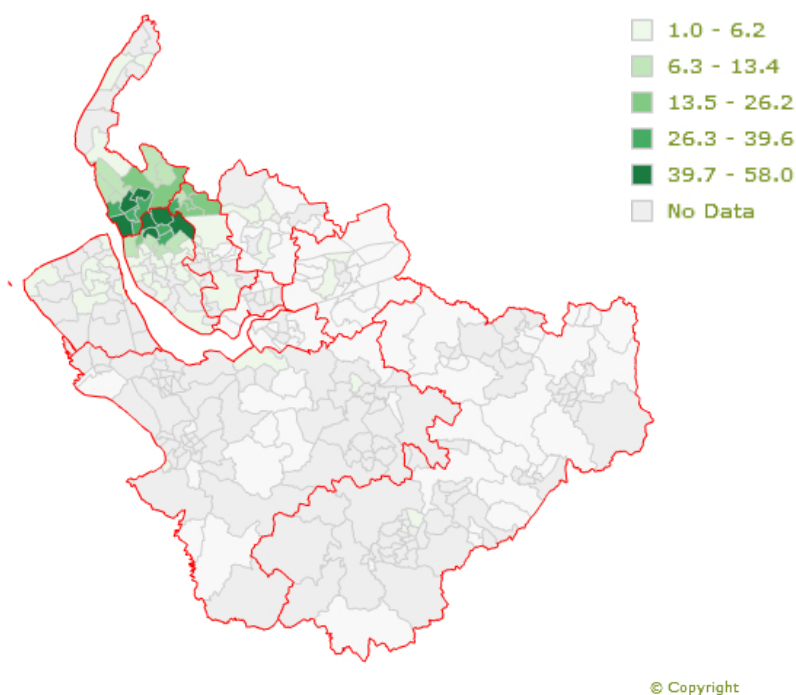
THE ROYAL LIVERPOOL UNIVERSITY HOSPITAL ASSAULT IN THE HOME ATTENDANCES BY WARD AND LA BOUNDARIES



UNIVERSITY HOSPITAL AINTREE

Between April 2011 and March 2013, University Hospital Aintree saw 857 assault in the home attendances made by Merseyside and Cheshire residents. This represented 27% of assault in the home attendances made by Merseyside and Cheshire residents. The majority of attendees were male (457; 53%) and were aged between 30-59 years (463; 54%) and 15-29 years (339; 40%). University Hospital Aintree does not currently collect any additional information from patients presenting at A&E who have been assaulted. The highest number of attendances to University Hospital Aintree came from the wards Warbreck (58), Linacre (56), Ford (47), Fazakerley (45) and Gillmoss (45). The map below shows University Hospital Aintree assault in the home attendances between April 2011 and March 2013.

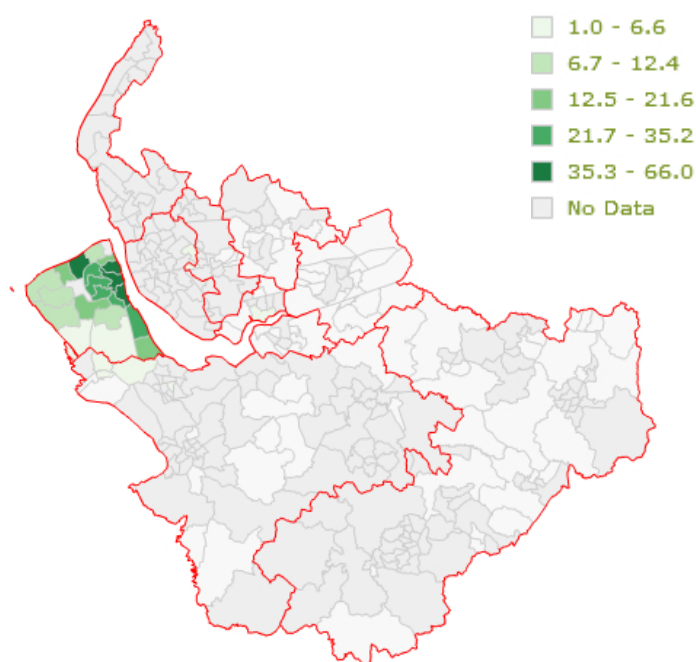
UNIVERSITY HOSPITAL AINTREE ASSAULT IN THE HOME ATTENDANCES BY WARD AND LA BOUNDARIES



ARROWE PARK HOSPITAL

Between April 2011 and March 2013, Arrowe Park Hospital saw 509 assault in the home attendances made by Merseyside and Cheshire residents. This represented 16% of assault in the home attendances made by Merseyside and Cheshire residents. The majority of attendees were female (295; 58%) and were aged between 30-59 years (276; 54%) and 15-29 years (196; 39%). Arrowe Park Hospital collects additional information from patients presenting at A&E who have been assaulted; this includes the patient's relationship to attacker and weapon of assault. Arrowe Park Hospital also collects a detailed location of assault. However as this report is only looking at patients who were assaulted at home, information on the location of assault can be derived from the patient's residence and does not need to be provided separately. The majority of attendances were assaulted by their partner (184; 36%), acquaintance/friend (97; 19%) or family member (84; 17%). Over one in ten were assaulted by their ex-partner (60; 12%) and 56 (11%) were assaulted by a stranger. Where collected (400 patients) 43% (171) patients had been assaulted by their attacker previously. When just looking at those patients who were assaulted by their partner and who provided a response to both questions, 88 (67%) had been assaulted by their attacker previously. The majority of attendees were attacked by one person (440; 86%). The majority of patients were assaulted with a body part (383; 75%), 5% with a blunt object (27) and 5% with a knife (23). Where an answer was provided (388 patients), 59% of attendees thought their attacker was drunk and 42% (out of 474 patients) of patients had consumed alcohol (199) prior to being assaulted. In most cases (70%; 140) the alcohol had been consumed at home. Where collected (451 patients), 382 (85%) of attendees said the incident would be reported to the police. The highest number of attendances to Arrowe Park Hospital came from the wards Birkenhead (66), Tranmere (56), Leasowe (37), Seacombe (37) and Bidston (34). The map below shows Arrowe Park assault in the home attendances between April 2011 and March 2013.

ARROWE PARK HOSPITAL ASSAULT IN THE HOME ATTENDANCES BY WARD AND LA BOUNDARIES

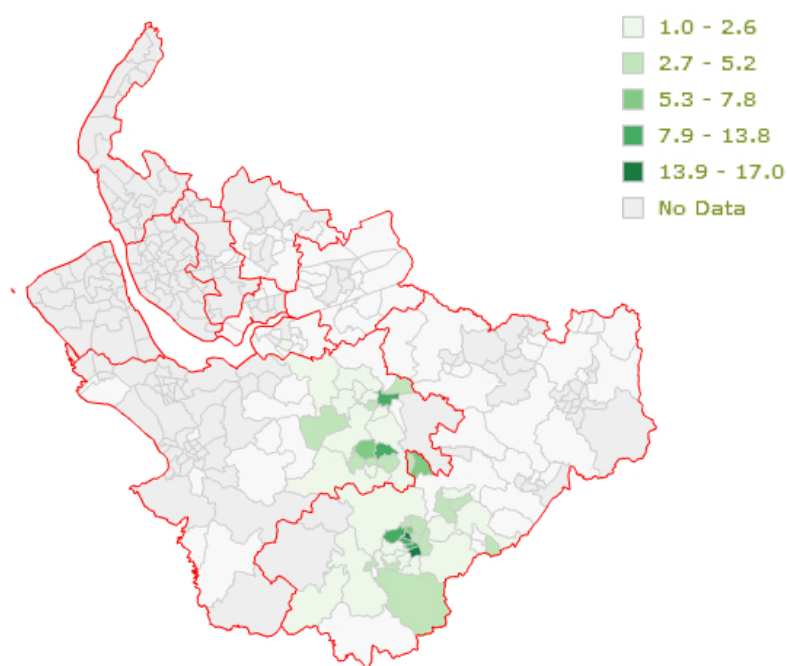


© Copyright

LEIGHTON HOSPITAL

Between April 2011 and March 2013, Leighton Hospital saw 439 assault in the home attendances made by Merseyside and Cheshire residents. This represented 14% of assault in the home attendances made by Merseyside and Cheshire residents. The majority of attendees were male (243; 55%) and were aged between 15-29 years (206; 47%) and 30-59 years (187; 43%). Leighton Hospital does not currently collect any additional information from patients presenting at A&E who have been assaulted. The highest number of attendances to Leighton Hospital came from the wards Grosvenor (17), Alexandra (15), Winsford Wharton (13), St Barnabas (11) and St John's Valley and Northwich Witton (both 8). The map below shows Leighton assault in the home attendances between April 2011 and March 2013. Please note only 198 (45%) attendances from Leighton Hospital could be assigned to ward level residence.

LEIGHTON HOSPITAL ASSAULT IN THE HOME ATTENDANCES BY WARD AND LA BOUNDARIES

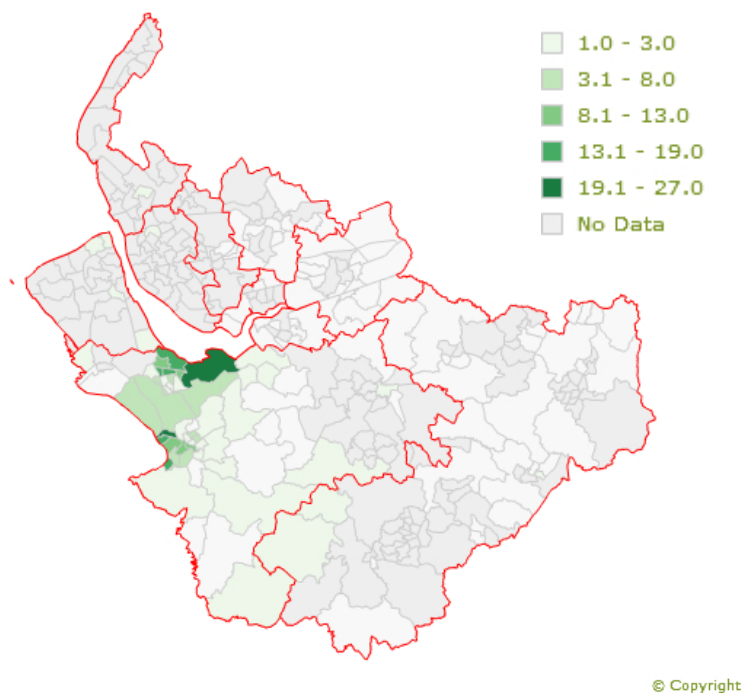


© Copyright

THE COUNTESS OF CHESTER HOSPITAL

Between April 2011 and March 2013, The Countess of Chester Hospital saw 284 assault in the home attendances made by Merseyside and Cheshire residents. This represented 9% of assault in the home attendances made by Merseyside and Cheshire residents. The majority of attendees were male (145; 51%) and were aged between 30-59 years (145; 51%) and 15-29 years (110; 39%). The Countess of Chester Hospital also collects a detailed location of assault; however as this report is only looking at patients who were assaulted at home, information on the location of assault can be derived from the patient's residence and does not need to be provided separately. The highest number of attendances to Countess of Chester Hospital came from the wards, Stanlow and Wolverham (27), Blacon Hall (25), Grange (19), Lache Park (19) and Westminster (17). The map below shows Countess of Chester assault in the home attendances between April 2011 and March 2013.

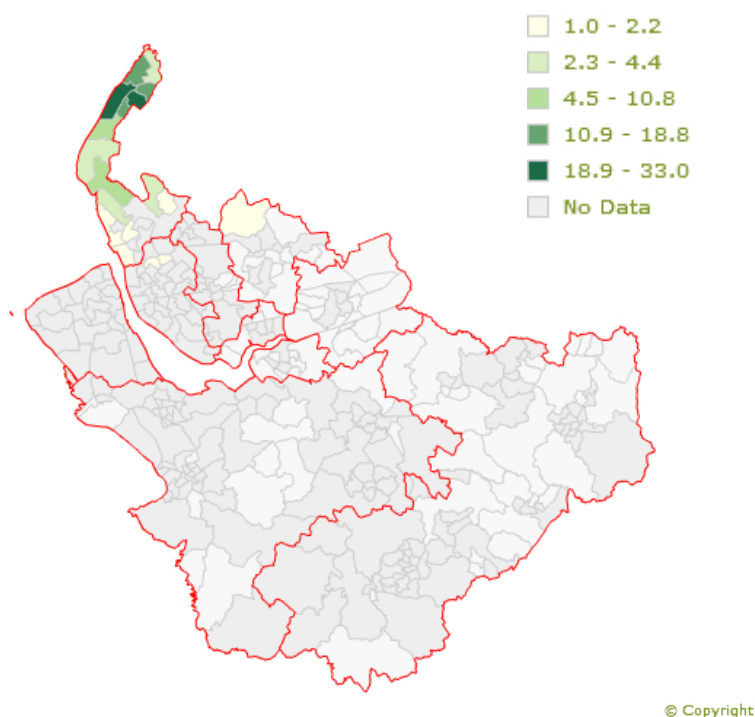
THE COUNTESS OF CHESTER HOSPITAL ASSAULT IN THE HOME ATTENDANCES BY WARD AND LA BOUNDARIES



SOUTHPORT AND FORMBY DISTRICT GENERAL HOSPITAL

Between April 2011 and March 2013, Southport and Formby District General Hospital saw 129 assault in the home attendances made by Merseyside and Cheshire residents. This represented 4% of assault in the home attendances made by Merseyside and Cheshire residents. The majority of attendees were female (68; 53%) and were aged between 30-59 years (69; 53%) and 15-29 years (52; 40%). Southport and Formby District General Hospital collects additional information from patients presenting at A&E who have been assaulted; this includes the patient's relationship to attacker and weapon of assault. Southport and Formby District General Hospital also collects a detailed location of assault; however as this report is only looking at patients who were assaulted at home, information on the location of assault can be derived from the patient's residence and does not need to be provided separately. Where collected (54 patients), the majority of attendances were assaulted by a family member (11; 20%), or partner (9; 17%) and 88% of attendances were assaulted by one attacker. Again, where collected (64 patients) the majority of patients were assaulted with a body part (49; 77%). Where collected (38 patients), 39% had consumed alcohol (15) prior to being assaulted and in most of these cases (9; 60%) the alcohol had been consumed at home. The highest number of attendances to Southport and District Formby General Hospital came from the wards, Dukes (33), Kew (20), Norwood (14), Cambridge (14) and Birkdale (12). The map below shows Southport and Formby District General Hospital assault in the home attendances between April 2011 and March 2013.

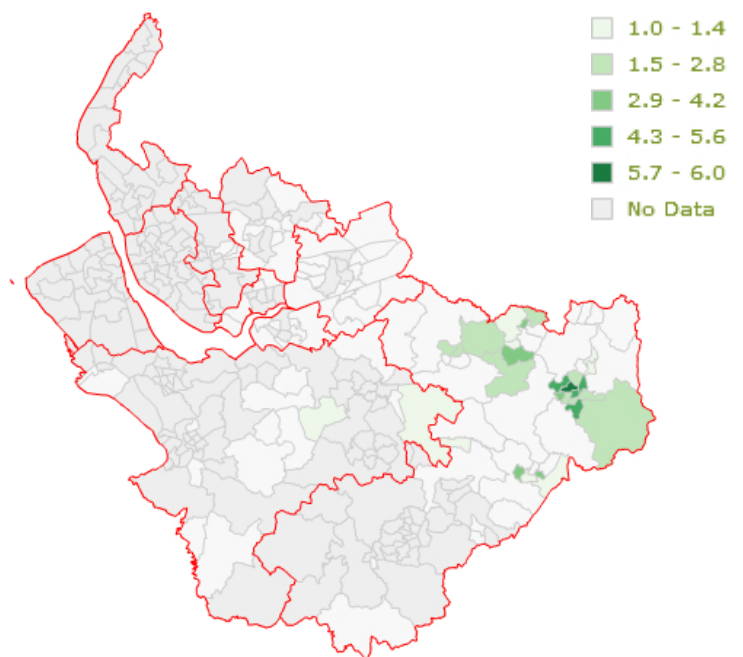
SOUTHPORT AND FORMBY DISTRICT GENERAL HOSPITAL ASSAULT IN THE HOME ATTENDANCES BY WARD AND LA BOUNDARIES



MACCLESFIELD DISTRICT GENERAL HOSPITAL

Between April 2011 and March 2013, Macclesfield District General Hospital saw 71 assault in the home attendances made by Merseyside and Cheshire residents. This represented 2% of assault in the home attendances made by Merseyside and Cheshire residents. The majority of attendees were female (38; 54%) and were aged between 30-59 years (29; 41%) and 15-29 years (24; 34%). Macclesfield District General Hospital does not currently collect any additional information from patients presenting at A&E who have been assaulted. The highest number of attendances to Macclesfield District General Hospital came from the wards, Macclesfield Bollinbrook (6), Macclesfield Broken Cross (5), Macclesfield South (5), Macclesfield Central (5) and Macclesfield Hurdsfield (5). The map below shows Macclesfield District General Hospital assault in the home attendances between April 2011 and March 2013.

MACCLESFIELD DISTRICT GENERAL HOSPITAL ASSAULT IN THE HOME ATTENDANCES BY WARD AND LA BOUNDARIES

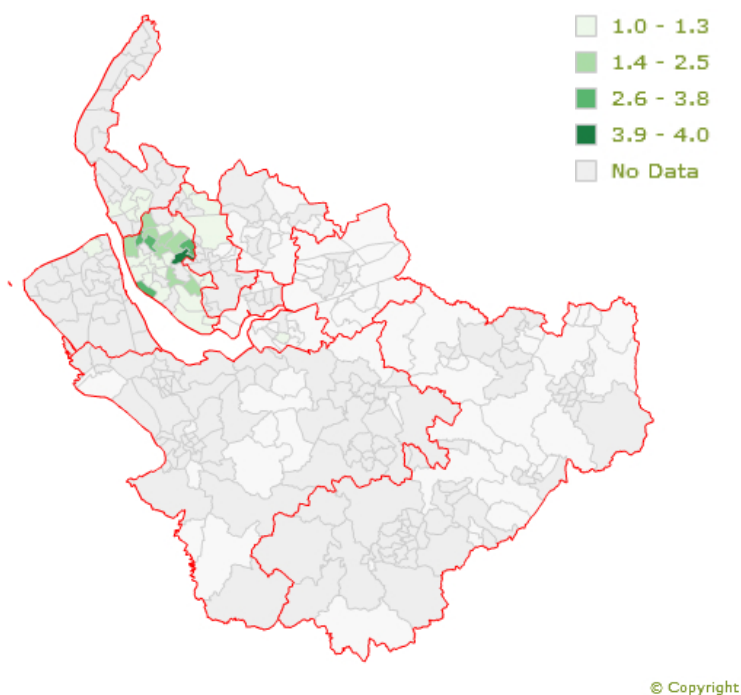


© Copyright

ALDER HEY CHILDREN'S NHS HOSPITAL

Between April 2011 and March 2013, Alder Hey Children's NHS Hospital saw 57 assault in the home attendances made by Merseyside and Cheshire residents. This represented 2% of assault in the home attendances made by Merseyside and Cheshire residents. The majority of attendees were male (37; 65%) and were aged between 5-14 years (30; 53%). Alder Hey Children's NHS Hospital does not currently collect any additional information from patients presenting at A&E who have been assaulted. The highest number of attendances to Alder Hey Children's NHS Hospital came from the wards, Broadgreen (<5), Dingle (<5), Church (<5), Anfield (<5) and Dovecot (<5). The map below shows Alder Hey Children's NHS Hospital assault in the home attendances between April 2011 and March 2013.

ALDER HEY CHILDREN'S NHS HOSPITAL ASSAULT IN THE HOME ATTENDANCES BY WARD AND LA BOUNDARIES



APPENDIX 1

Ward of residence	A&E local authority of residence									
	Cheshire East	Cheshire West and Chester	Halton	Knowsley	Liverpool	Sefton	St. Helens	Warrington	Wirral	Grand Total
Tuebrook					92					92
Kensington					89					89
County					72					72
Warbreck					68					68
Birkenhead									67	67
Linacre						64				64
Anfield					60					60
Tranmere									58	58
Breckfield					57					57
Church					24	31				55
Gillmoss					53					53
Melrose					52					52
Granby					52					52
Pirrie					50					50
Ford						50				50
Fazakerley					46					46
St Oswald						45				45
Seacombe									40	40
Derby						40				40
Everton					40					40
Netherton and Orrell						40				40
Clubmoor					38					38
Vauxhall					38					38
Dukes						37				37
Leasowe									37	37
Litherland						36				36
Bidston									35	35
Whitefield				33						33
Egerton									32	32
Old Swan					31					31
Bromborough									30	30
Stanlow & Wolverham		27								27
Arundel					27					27
Picton					27					27
Tower Hill				26						26
Abercromby					26					26

Aigburth					25					25
Blacon Hall		25								25
Dingle					24					24
Park				14		10				24
Smithdown					24					24
Oxton									23	23
Claughton									23	23
Upton									23	23
Croxteth					22					22
Moreton									22	22
Cherryfield				21						21
St. Mary's					21					21
New Brighton									20	20
Lache Park		20								20
Northwood				20						20
Kew						20				20
Grange		19								19
Sudell						19				19
Allerton					18					18
Broadgreen					18					18
Grosvenor	18									18
Liscard									18	18
Westminster		17								17
Molyneux						17				17
Childwall					16					16
Norwood						16				16
Eastham									16	16
Rivacre		15								15
Alexandra	15									15
Kirkby Central				15						15
Blacon Lodge		15								15
Wallasey									15	15
Dovecot					15					15
Prenton									15	15
Manor						14				14
Cambridge						14				14
Central		13								13
Hoylake									13	13
Bebington									13	13
City & St Anne's		13								13
Winsford Wharton		13								13
Blundellsands						13				13
Birkdale						12				12
Woolton					12					12
Valley					11					11

Speke					11					11
College		11								11
Victoria						11				11
St Barnabas	11									11
Northwich Witton		9								9
Boughton		9								9
Ainsdale						9				9
Rossmore		9								9
Valley	8									8
Newton St Michaels		8								8
Grassendale					8					8
St John's	8									8
Royden								8		8
Maw Green	7									7
Clatterbridge								7		7
Thurstaston								7		7
Coppenhall	7									7
Ravenmeols						6				6
Heswall								6		6
Macclesfield Bollinbrook	6									6
St. Michaels				6						6
Winsford Verdin		6								6
Morley & Styal	6									6
Middlewich Cledford	6									6
Pooltown		6								6
Halewood East				5						5
Alsager East	5									5
Netherley					5					5
Waldron	5									5
Elton		5								5
Macclesfield Hurdsfield	5									5
Delamere	5									5
Macclesfield Broken Cross	5									5
Macclesfield South	5									5
Macclesfield Central	5									5
Northwich Castle		5								5
Princess				5						5
Leighton	5									5
Sutton Green & Manor		5								5
Winsford Over		***								***
Poplars and Hulme								***		***
Congleton North	***									***
Neston		***								***
Knowsley Park				***						***
Saughall		***								***

Cantril Farm				***					***
Barony Weaver	***								***
Meols						***			***
Mollington		***							***
Cuddington & Oakmere		***							***
Congleton West	***								***
Hoole Groves		***							***
Halewood South				***					***
Curzon & Westminster		***							***
Handbridge & St Mary's		***							***
Harington						***			***
Page Moss				***					***
Lostock & Wincham		***							***
Sutton		***							***
Middlewich Kinderton	***								***
Mickle Trafford		***							***
Macclesfield West	***								***
Newton Brook		***							***
Winsford Dene		***							***
Hoole All Saints		***							***
Alderley Edge	***								***
Chistleton		***							***
Vicars Cross		***							***
Lacey Green	***								***
Willaston	***								***
Sandbach East	***								***
Winsford Gravel		***							***
Sandbach West	***								***
Barnton		***							***
Wybunbury	***								***
Sutton	***								***
Moss Bank							***		***
Halton Lea			***						***
Knutsford Nether	***								***
Ledsham		***							***
Northwich Winnington		***							***
Shavington	***								***
Weaverham		***							***
Leftwich & Kingsmead		***							***
Handforth	***								***
Longview				***					***
Milton Weaver		***							***
Mobberley	***								***
Upton Grange		***							***
Frodsham North		***							***

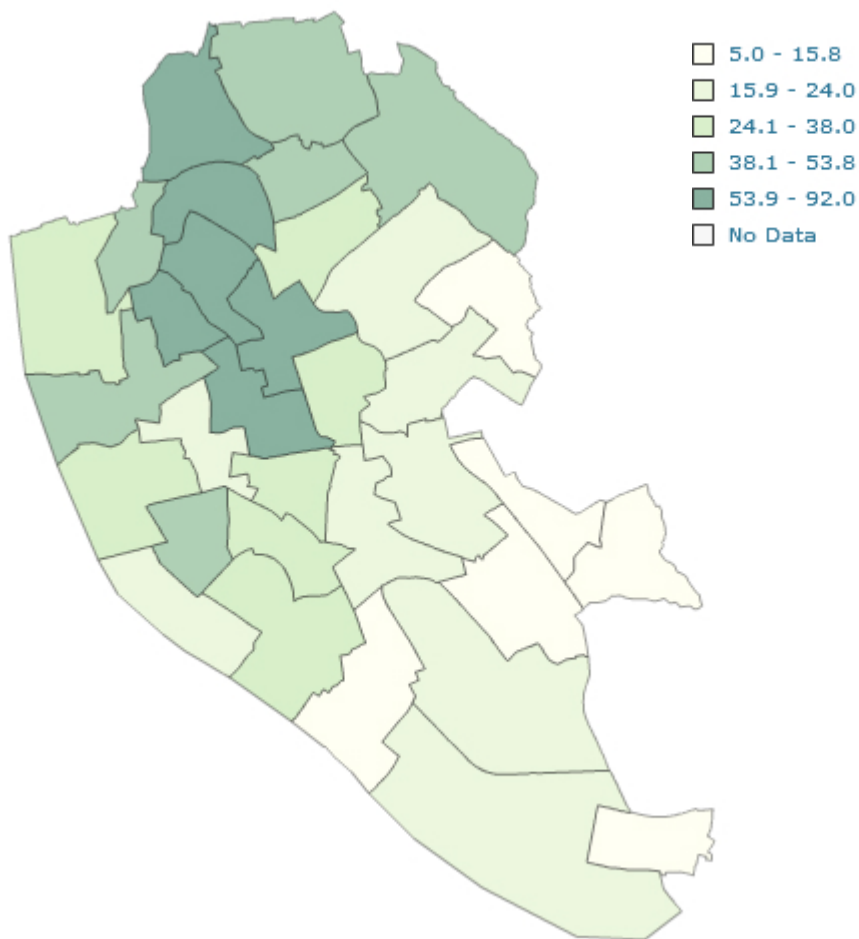
Chelford	***								***
Swanside				***					***
West Sutton							***		***
Tarporley & Oulton		***							***
Knutsford Over	***								***
Macclesfield East	***								***
Davenham & Moulton		***							***
Helsby		***							***
Winsford Swanlow		***							***
Macclesfield Ivy	***								***
Wistaston Green	***								***
Macclesfield Ryles	***								***
Macclesfield Tytherington	***								***
Strawberry Fields		***							***
St Mary's	***								***
Grange			***						***
Waverton		***							***
Minshull	***								***
Lawton	***								***
Cogshall		***							***
Bunbury	***								***
Fairfield and Howley							***		***
Birchin	***								***
Appleton			***						***
Sandbach North	***								***
Broadheath			***						***
Hough Green			***						***
St. Gabriels				***					***
Barrow		***							***
Little Neston		***							***
Wells Green	***								***
Haslington	***								***
Whitby		***							***
Congleton Central	***								***
Windle							***		***
Parkgate		***							***
Halewood West				***					***
Peckforton	***								***
Bollington Central	***								***
Frodsham South		***							***
Englesea	***								***
Fulshaw	***								***
Blackbrook							***		***
Dodleston		***							***
Groves		***							***

Bollington East	***									***
Riverside		***								***
Tattenhall		***								***
Roby				***						***
Thatto Heath							***			***
Whiston South				***						***
Kingsway			***							***
Castlefields			***							***
Acton	***									***
Willaston & Thornton		***								***
Boughton Heath		***								***
Bewsey and Whitecross								***		***
Haydock							***			***
Holmes Chapel	***									***
Congleton South	***									***
Orford								***		***
Queen's Park							***			***
Shakerley		***								***
Rainford							***			***
Wrenbury	***									***
Halton View			***							***
Malpas		***								***
Hartford & Whitegate		***								***
Unknown	199	42							6	247
Total	410	395	9	169	1172	512	10	7	534	3218

APPENDIX 2

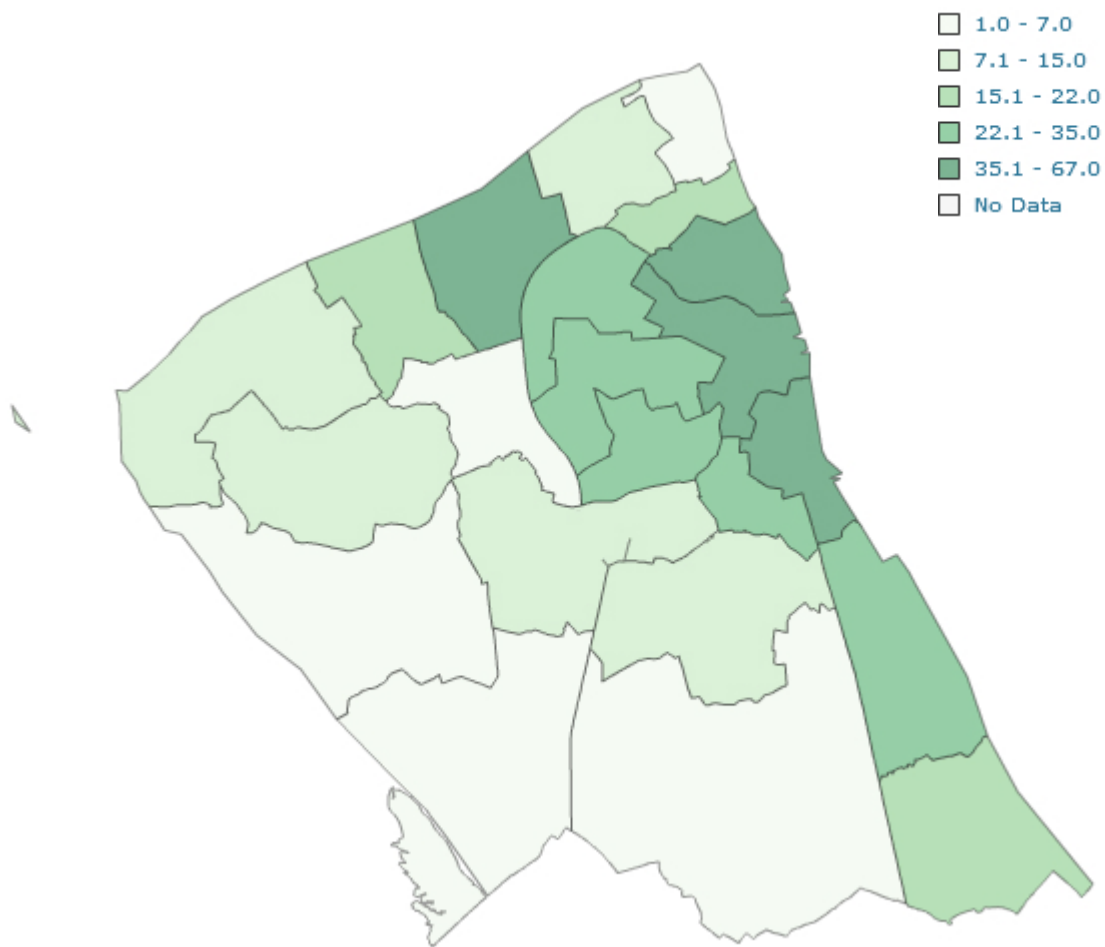
The maps in this section represent assault in the home attendances by local authority. Figures for each local authority are provided in the main body of the report.

LIVERPOOL LOCAL AUTHORITY WARD MAP



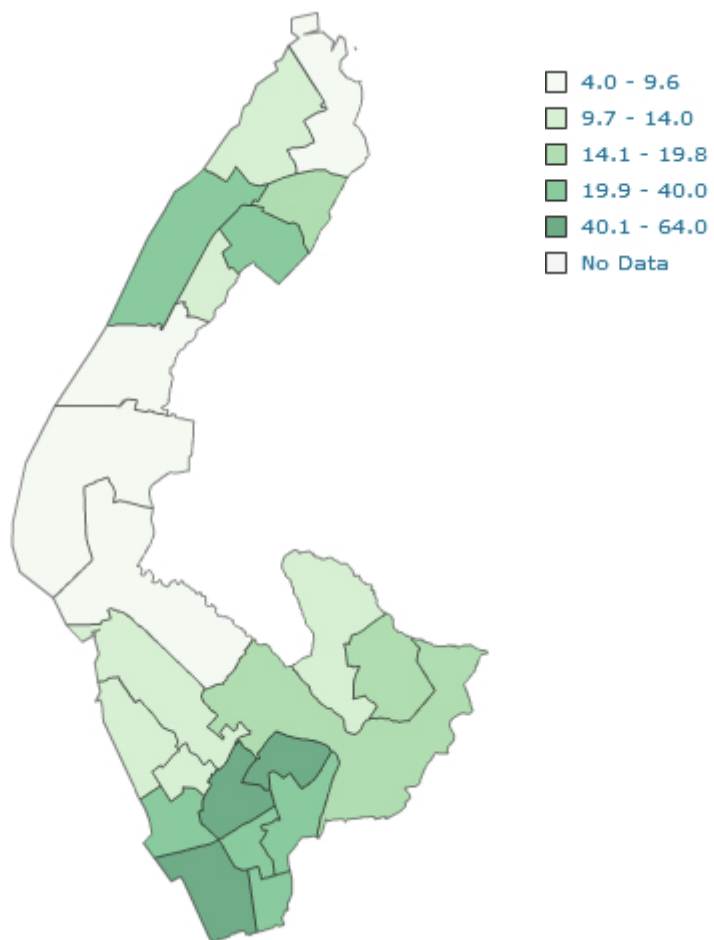
© Copyright

WIRRAL LOCAL AUTHORITY WARD MAP



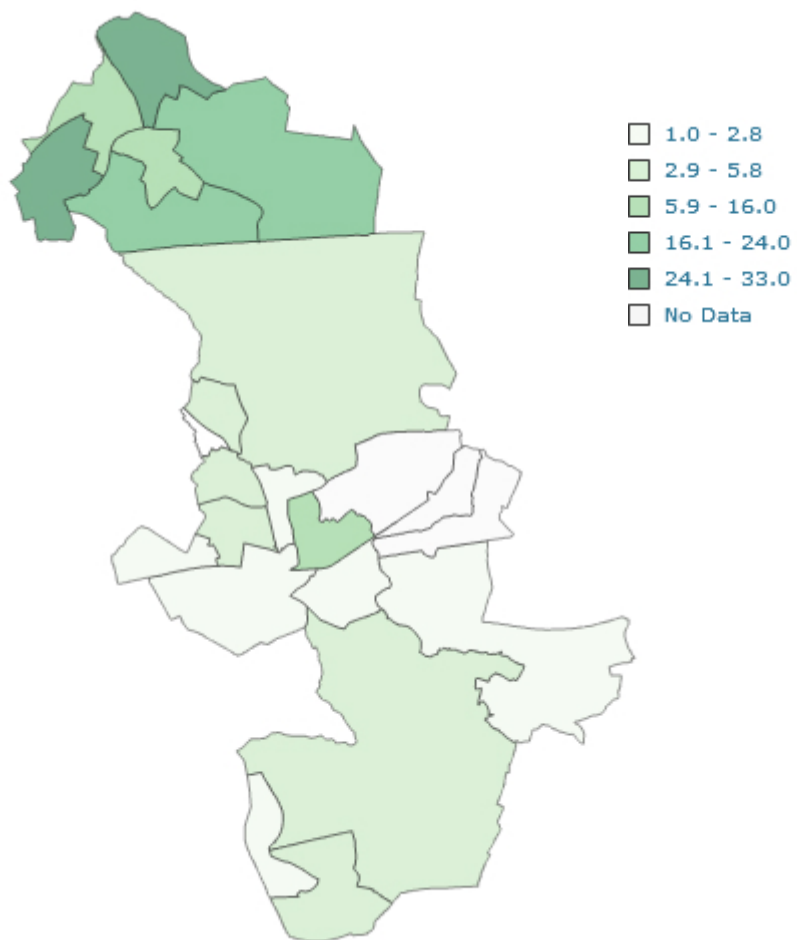
© Copyright

SEFTON LOCAL AUTHORITY WARD MAP



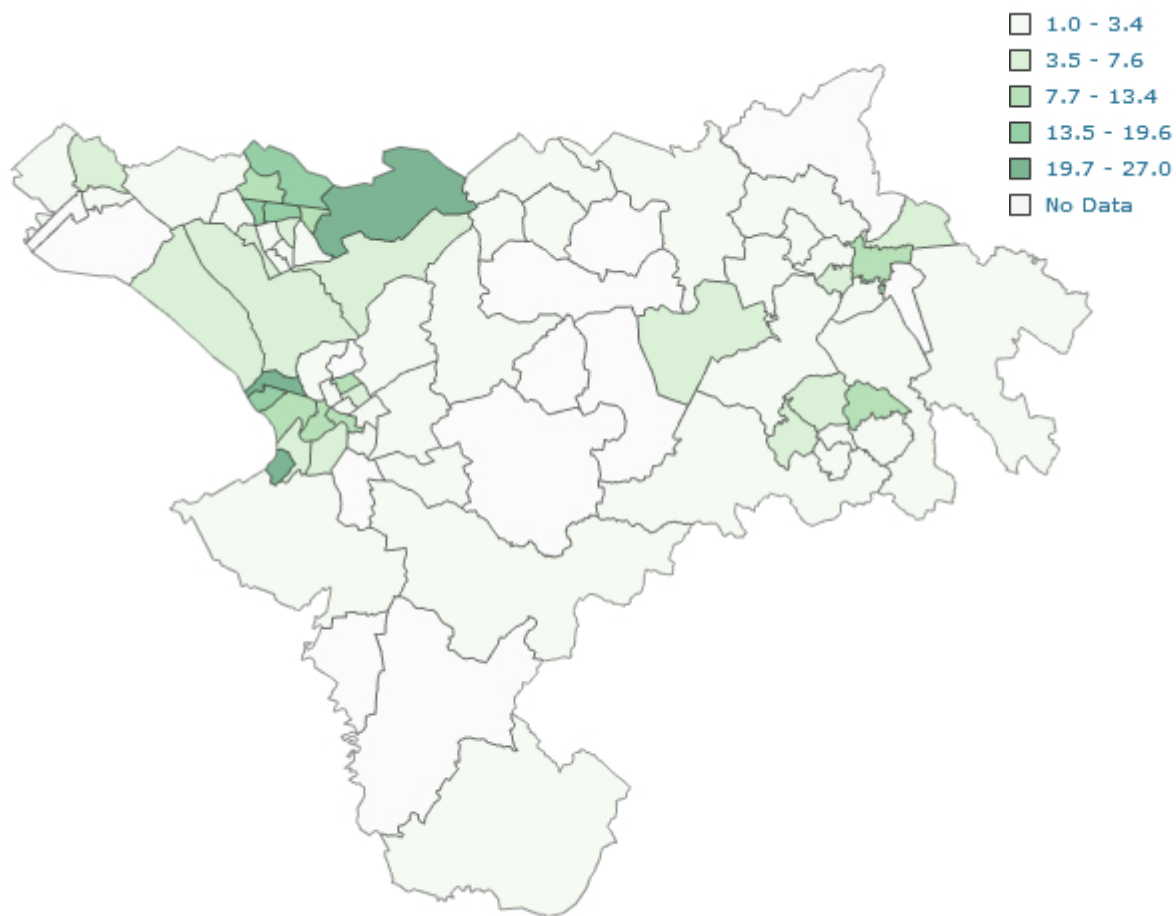
© Copyright

KNOWSLEY LOCAL AUTHORITY WARD MAP



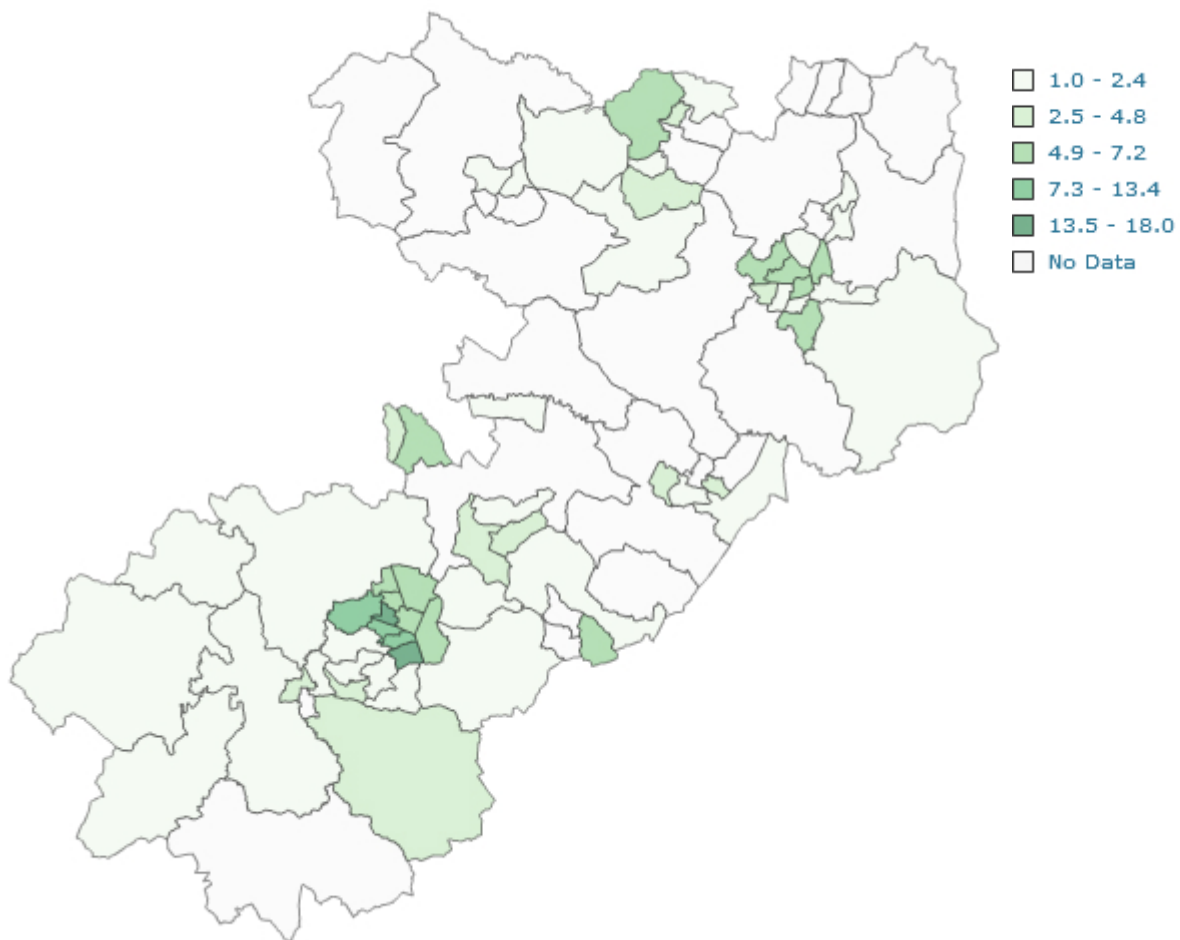
© Copyright

CHESHIRE WEST AND CHESTER LOCAL AUTHORITY WARD MAP

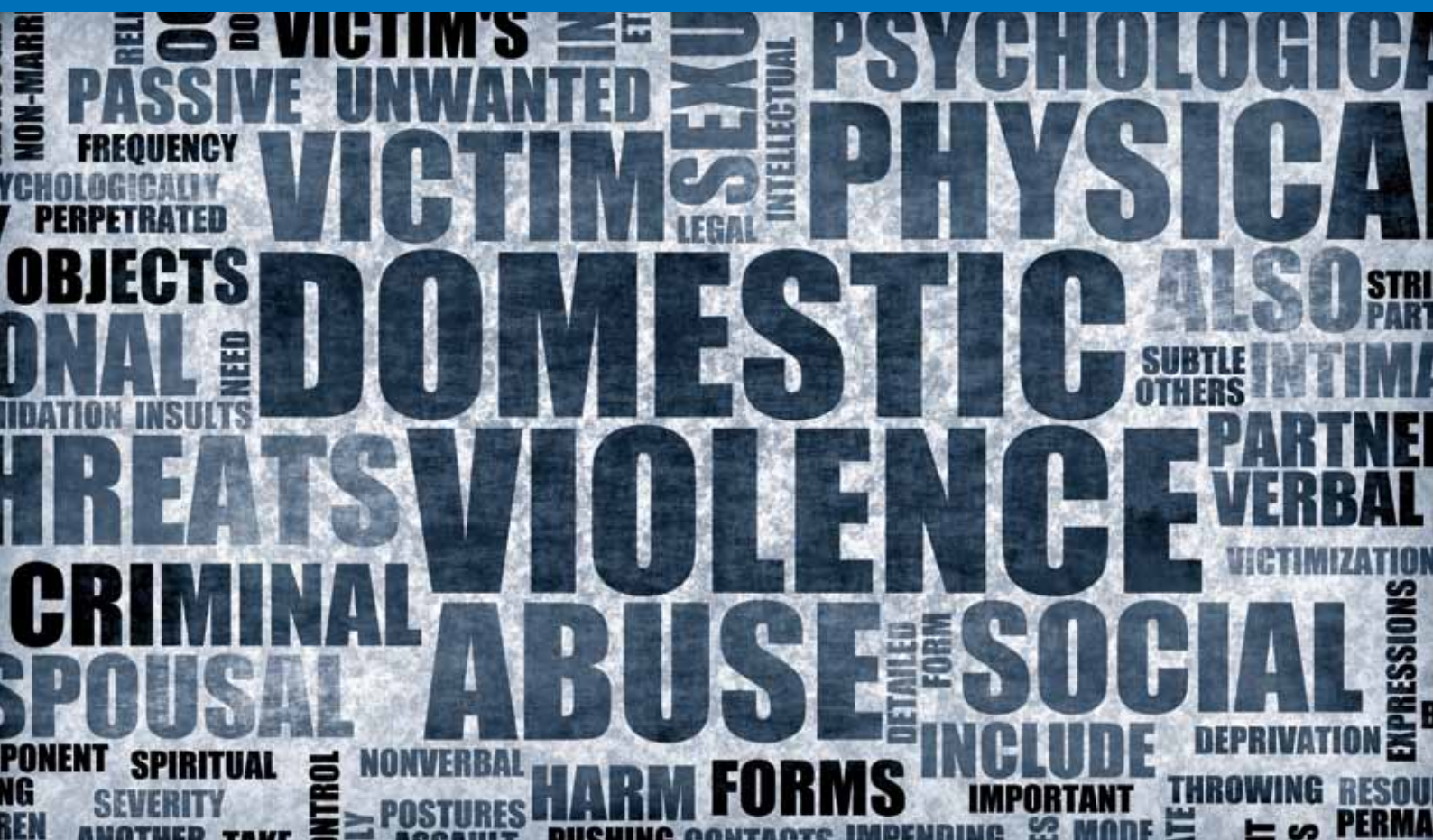


© Copyright

CHESHIRE EAST LOCAL AUTHORITY WARD MAP



© Copyright



Jennifer Brizell, Mark Whitfield

Centre for Public Health
Research Directorate
Faculty of Education, Health and Community
Liverpool John Moores University
Henry Cotton Campus
15-21 Webster Street
Liverpool
L3 2ET

0151 231 4500

j.s.brizell@ljmu.ac.uk

www.cph.org.uk

www.tig.info

www.twitter.com/tig_cph

ISBN: 978-1-908929-59-4 (print)

ISBN: 978-1-908929-58-7 (web)