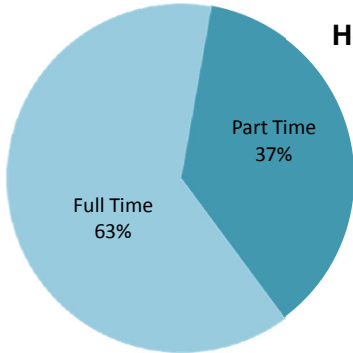
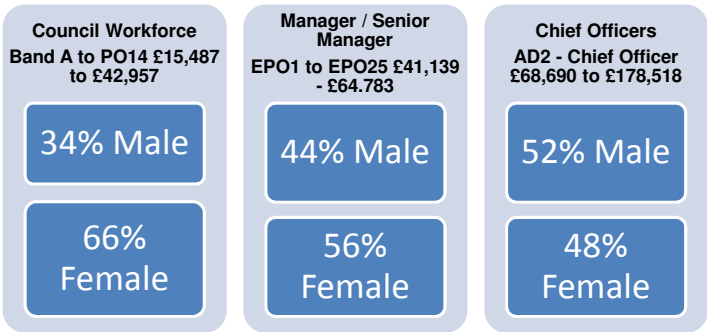


THIS IS WHO WE ARE

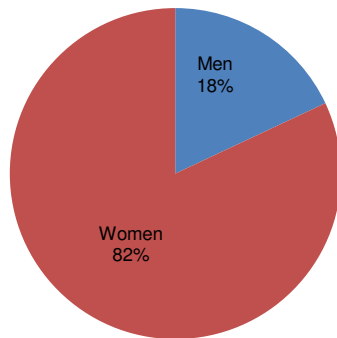


Council Workforce: 64% Females 36% Males

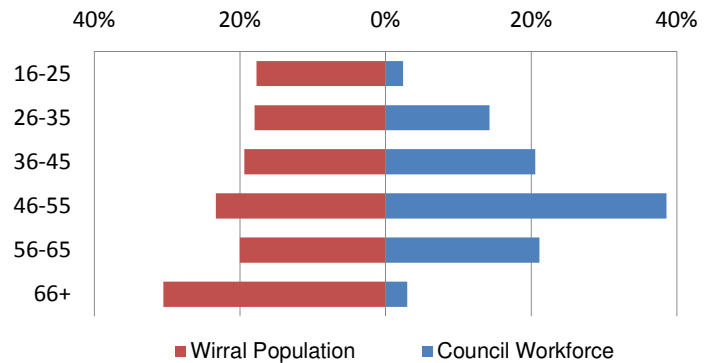
Wirral Population: 51% Females 49% Males



Hours



Age



Council Workforce

- BME 2.3%
- White 86.8%
- Unknown 10.8%

Wirral Population

- BME 4.0%
- White 94.7%
- Unknown 1.3%

Council Workforce

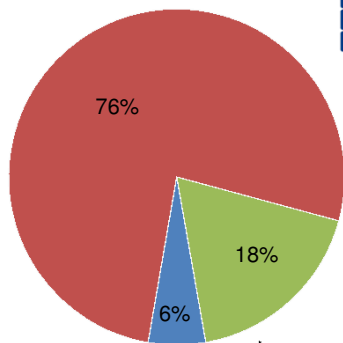
- Heterosexual 59.57%
- LGB 1.4%
- Unknown 38.68%

UK Population

- Heterosexual 93.7%
- LGB 1.7%
- Unknown 4.6%

The North West region has the second highest population rate in the country for people who identify as gay or lesbian and bisexual

Council Workforce with a disability

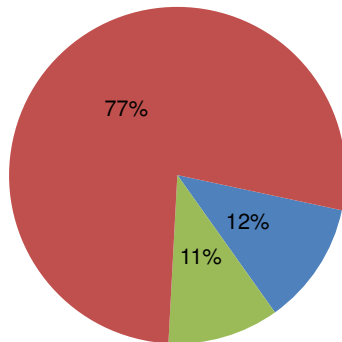


■ Disability ■ No Disability ■ Unknown



Wirral Population

(Based on long-term health problem or disability)



■ A lot ■ A Little ■ Not at All

Religion or Belief

