

The weekly Coronavirus (COVID-19) surveillance report for Wirral

Week ending: Friday 18th December 2020

cumulative data from:

30 January 2020 to 18 December 2020 in WIRRAL

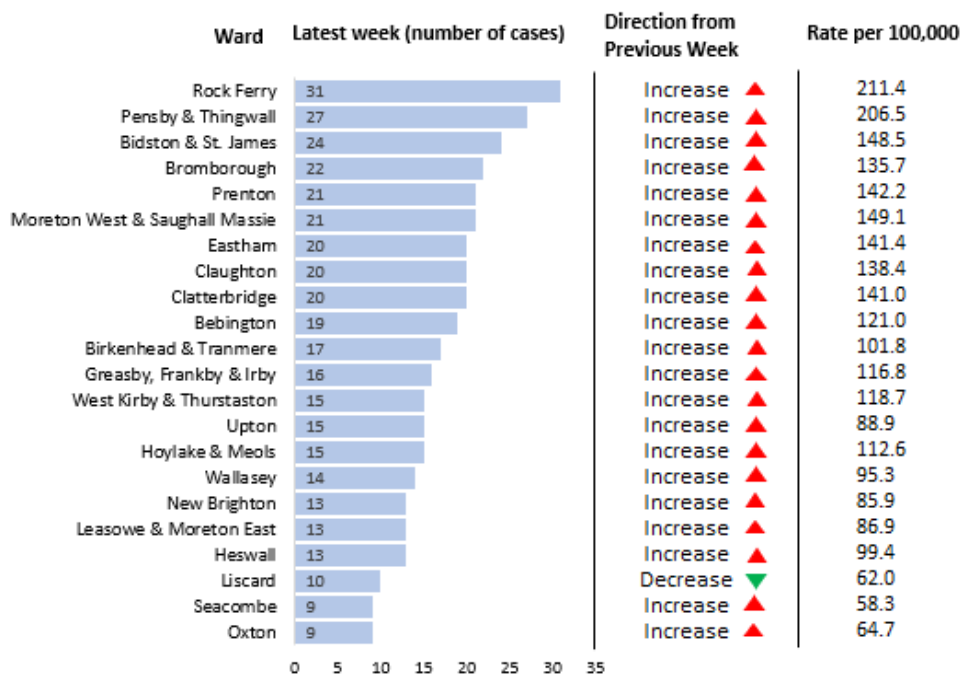
total number of COVID-19 cases (Pillar 1+2)	total tests per 100K population	total number of registered COVID-19 deaths to 11 th December
10,802	59,020	581
number of COVID-19 cases this week (Pillar 1+2)	tests per 100K population this week	number of COVID-19 deaths registered this week (ending 11 th December)
389	5,166	8

7-DAY POSITIVITY OF COVID-19 TESTS

4.9%

7-DAY CONFIRMED COVID-19 INFECTION RATES¹

Confirmed Cases by Wirral Ward (7-days to 17/12/20)*



*Note: Numbers of cases are incomplete and subject to variability due to delays in uploading cases data into the SGSS reporting system. This means the numbers of confirmed cases may not be directly comparable with previous reports.

Wirral	120.1 /100,000 infection rate ¹
Merseyside	129.7 /100,000 infection rate ¹
North West	171.9 /100,000 infection rate ¹
England	301.8 /100,000 infection rate ¹
National Rank	284th ²
Previous Week's Rank	297th ²

¹infection (incidence) rate - the cumulative number of confirmed cases of COVID-19 for the 7-day period divided by the total population of each area multiplied by 100,000

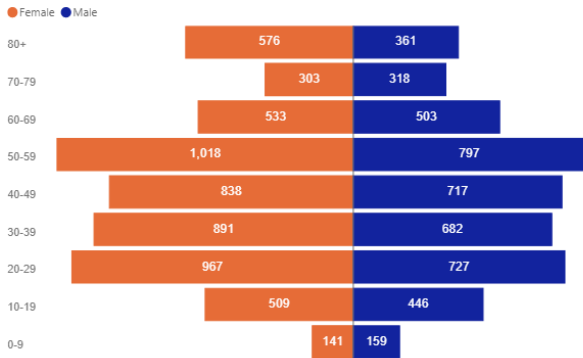
²A rank of the rate of COVID-19 per 100,000 by local authority. There are 343 local authorities in England. A decrease in rank does not necessarily mean our rate is decreasing, rather, other areas rates are increasing at a greater speed.

The weekly Coronavirus (COVID-19) surveillance report for Wirral

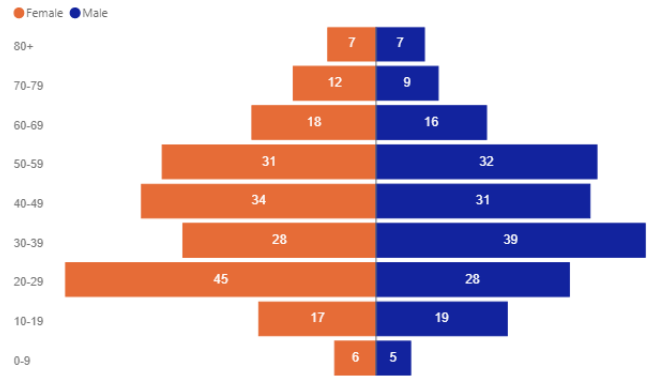
Week ending: Friday 18th December 2020

CONFIRMED COVID-19 CASES BY AGE AND GENDER

Cumulative



7-days



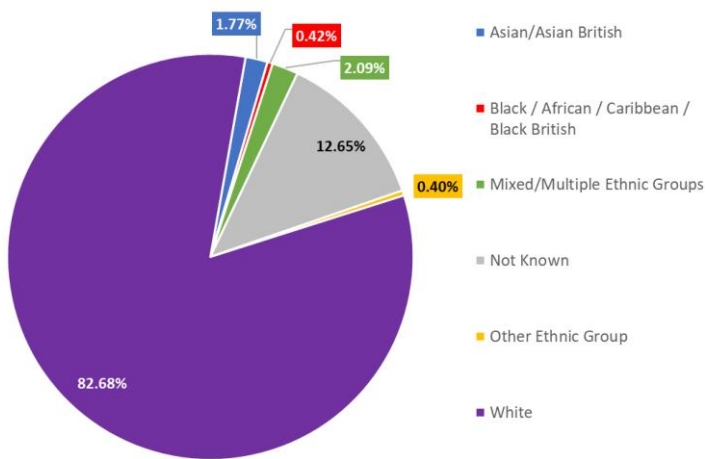
44 years all time median age³

7-day median age³ **40 years**

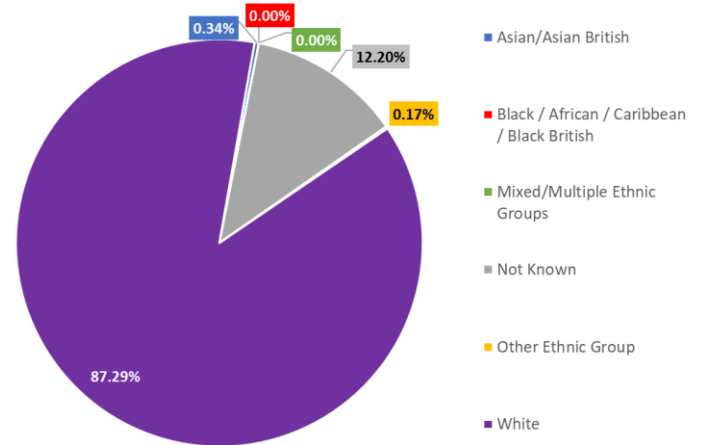
³median age is the middle value in a range - half of the cases are younger than this age and half are older (all persons)

Note: Some case records do not currently have full age and/or gender details and are therefore not included in the above chart; therefore, figures will not sum to headline totals

ETHNICITY OF CONFIRMED COVID-19 CASES



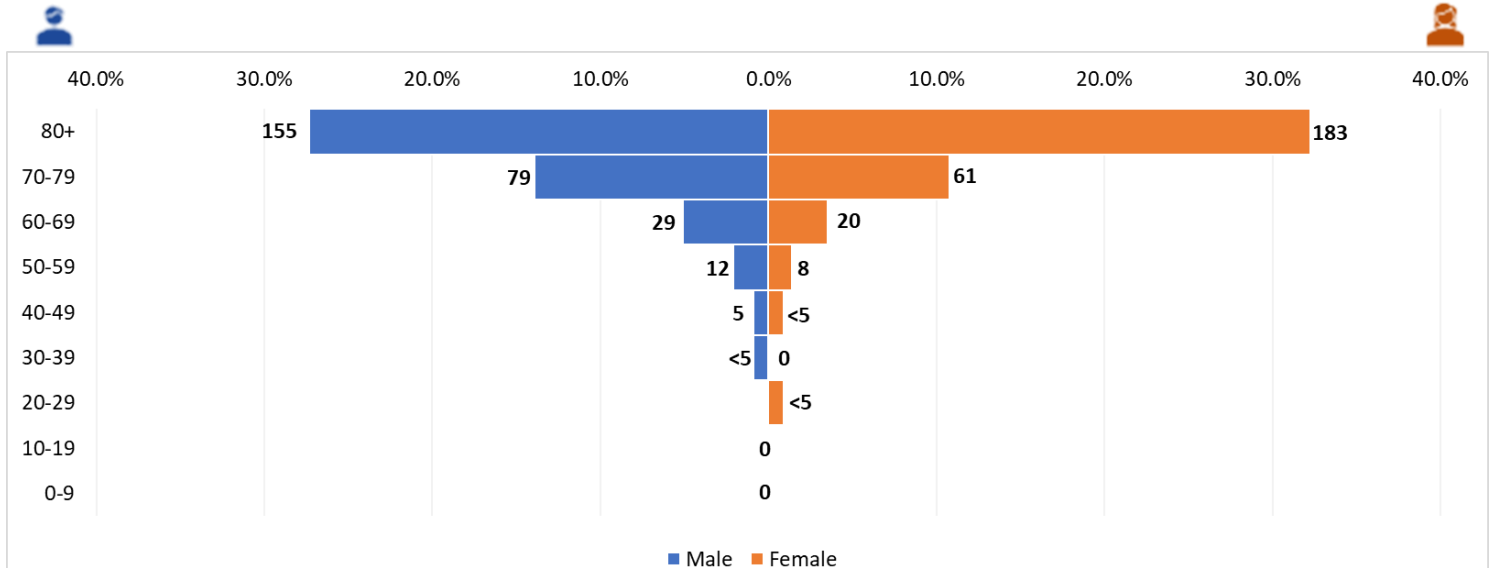
ETHNICITY OF COVID-19 DEATHS



Note: These data are analysed using the cumulative confirmed cases and COVID-19 related deaths in Wirral

COVID-19 RELATED MORTALITY

cumulative number of COVID-19 related deaths in Wirral



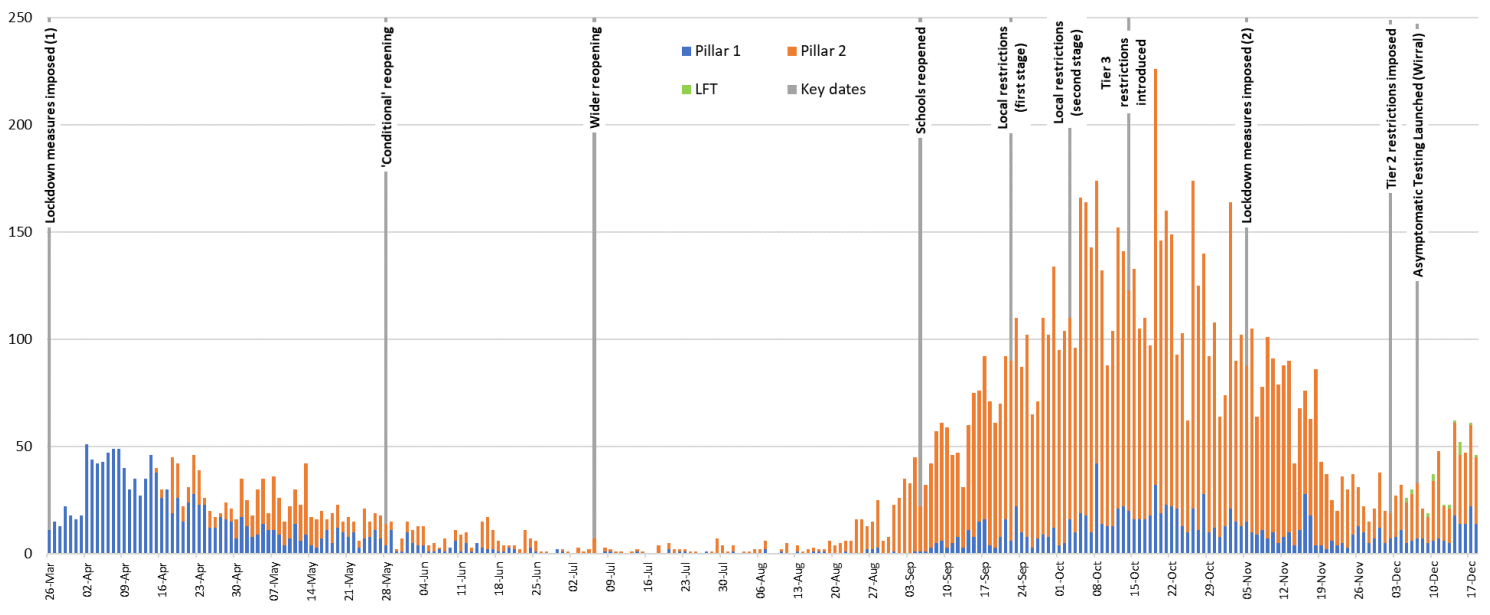
Note: The above data has followed the methodology of the PHE indicator for 'Deaths within 28 days of a positive COVID-19 test' since reporting for week ending 30th October and is therefore not comparable to reports prior to that week. The figures are still derived using a local live data source and so will therefore not exactly match the number of deaths officially reported by the Office for National Statistics or the PHE Coronavirus Tracker.

The weekly Coronavirus (COVID-19) surveillance report for Wirral

Week ending: Friday 18th December 2020

EPIDEMIC CURVE

number of positive cases by Pillar 1 and Pillar 2 testing⁴



⁴The most recent week is a partial week and only data from more than five days ago can be considered complete

The data are shown by the date the specimen was taken

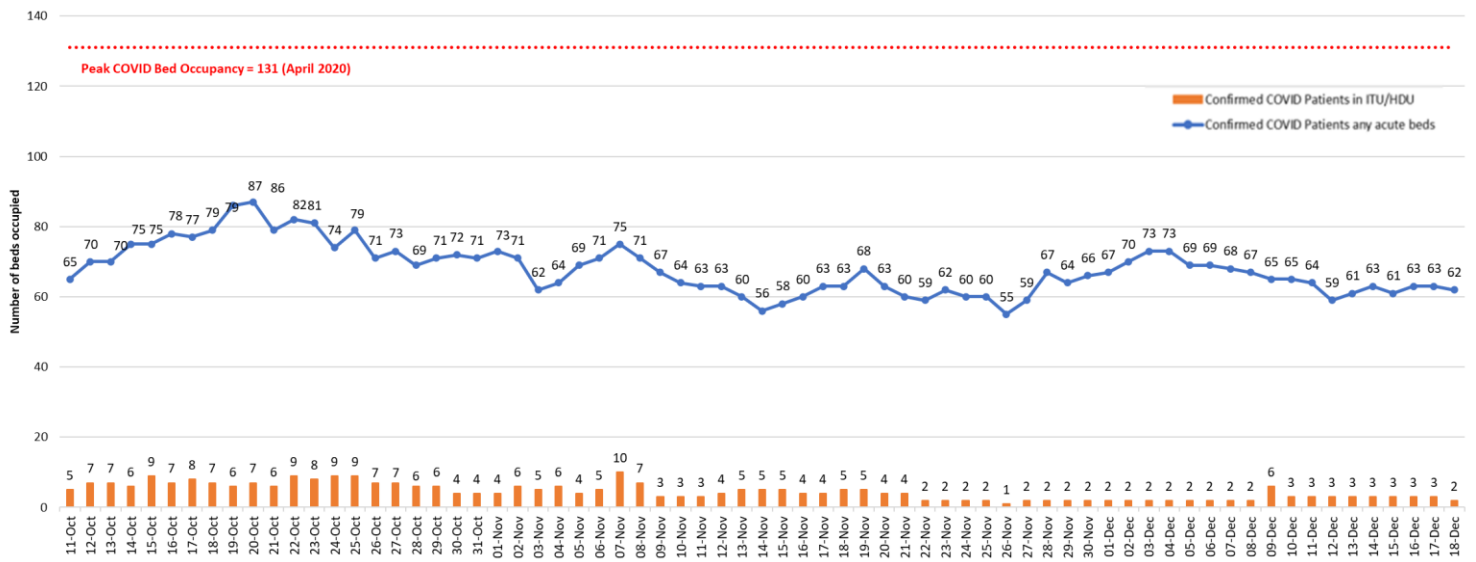
To allow data to be seen accurately, the chart only shows data from the date lock down measures were imposed (23 March 2020); this includes the peak of the first wave (April 2020)

Pillar 1 data is for swab testing in PHE labs and NHS hospitals for those with a clinical need as well as staff

Pillar 2 data is for swab testing for the wider population, as set out in government guidance

HOSPITALISED COVID-19 CASES

Number of beds occupied by confirmed COVID-19 patients by bed type
(Wirral University Teaching Hospital NHS Foundation Trust)



Note: The peak date for hospital occupancy was in April 2020 with 131 confirmed COVID-19 patients in beds (peak number of ICU beds occupied by COVID-19 patients was 9 in the 'first wave', which was surpassed on 7th November (n=10)). It should also be noted that the ITU/HDU beds (orange) are a subset of 'any acute beds' (blue), e.g. on 9th October there 64 beds occupied by COVID-19 confirmed patients, 3 of these were in ITU/HDU beds.