



Wirral

Unitary Authority

This profile was published on 6 September 2016

Health Profile 2016

Health in summary

The health of people in Wirral is varied compared with the England average. Wirral is one of the 20% most deprived districts/unitary authorities in England and about 23% (13,100) of children live in low income families. Life expectancy for both men and women is lower than the England average.

Health inequalities

Life expectancy is 13.1 years lower for men and 10.0 years lower for women in the most deprived areas of Wirral than in the least deprived areas.

Child health

In Year 6, 19.6% (645) of children are classified as obese. The rate of alcohol-specific hospital stays among those under 18 was 61.2*, worse than the average for England. This represents 41 stays per year. Levels of teenage pregnancy and breastfeeding initiation are worse than the England average. Levels of GCSE attainment are better than the England average.

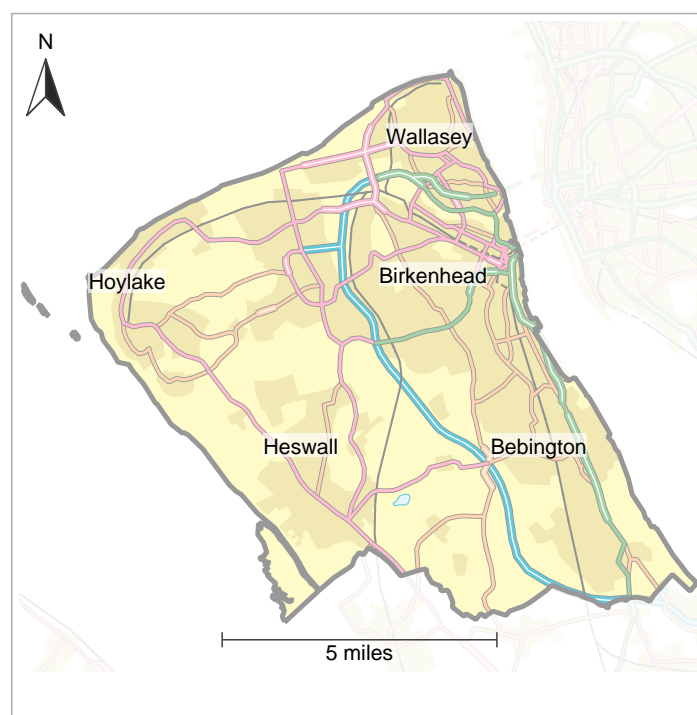
Adult health

The rate of alcohol-related harm hospital stays is 819*, worse than the average for England. This represents 2,591 stays per year. The rate of self-harm hospital stays is 274.2*, worse than the average for England. This represents 846 stays per year. The rate of smoking related deaths is 320*, worse than the average for England. This represents 641 deaths per year. Estimated levels of adult physical activity are worse than the England average. The rate of sexually transmitted infections is worse than average. The rate of TB is better than average. The rate of early deaths from cardiovascular diseases is worse than average. Rates of statutory homelessness and violent crime are better than average.

Local priorities

Priorities in Wirral include a healthy older age, a positive start in life and keeping people well (reducing alcohol, tobacco, and blood pressure). For more information see info.wirral.nhs.uk and www.wirral.gov.uk

* rate per 100,000 population



Contains OS data © Crown copyright and database rights 2016

Population: 321,000

Mid-2014 population estimate. Source: Office for National Statistics.

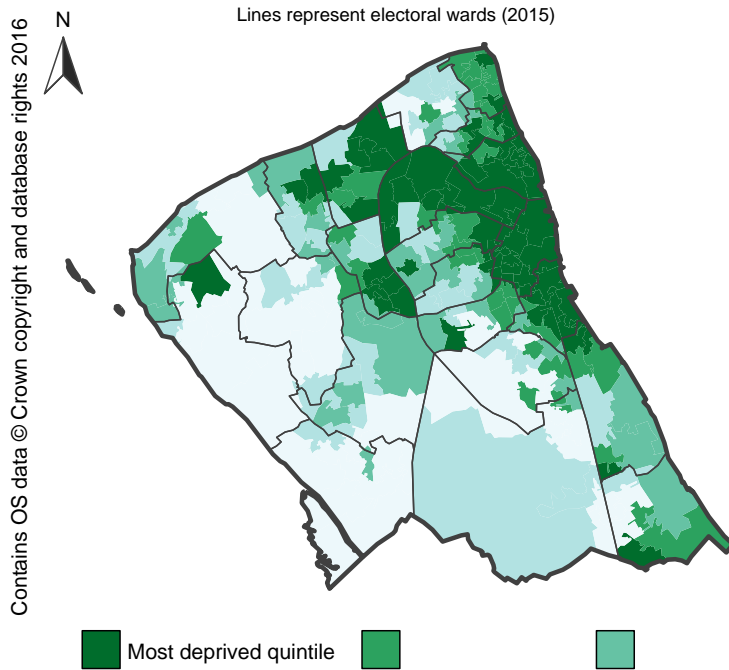
This profile gives a picture of people's health in Wirral. It is designed to help local government and health services understand their community's needs, so that they can work together to improve people's health and reduce health inequalities.

Visit www.healthprofiles.info for more profiles, more information and interactive maps and tools.

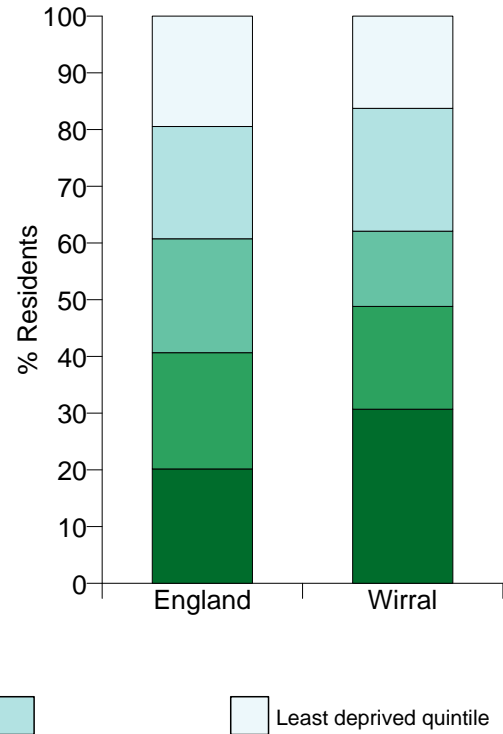
Follow [@PHE_uk](https://twitter.com/PHE_uk) on Twitter

Deprivation: a national view

The map shows differences in deprivation in this area based on national comparisons, using quintiles (fifths) of the Index of Multiple Deprivation 2015 (IMD2015), shown by lower super output area. The darkest coloured areas are some of the most deprived neighbourhoods in England.



This chart shows the percentage of the population who live in areas at each level of deprivation.



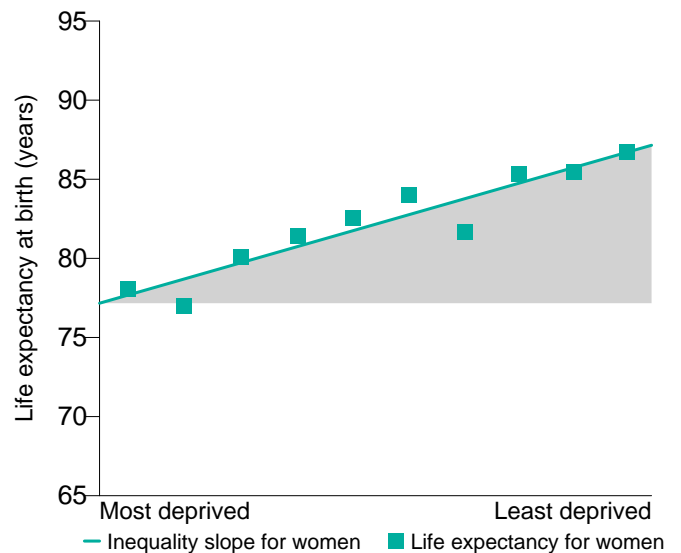
Life expectancy: inequalities in this local authority

The charts below show life expectancy for men and women in this local authority for 2012-2014. Each chart is divided into deciles (tenths) by deprivation (IMD2010), from the most deprived decile on the left of the chart to the least deprived decile on the right. The steepness of the slope represents the inequality in life expectancy that is related to deprivation in this local area. If there was no inequality in life expectancy as a result of deprivation, the line would be horizontal.

Life expectancy gap for men: 13.1 years



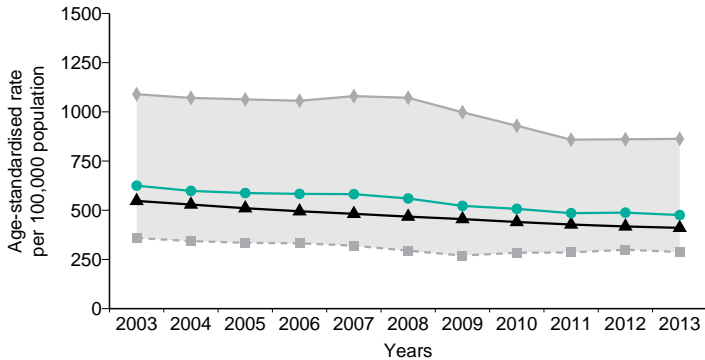
Life expectancy gap for women: 10.0 years



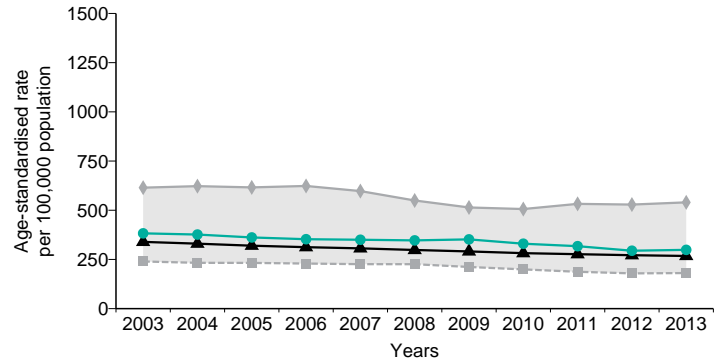
Health inequalities: changes over time

These charts provide a comparison of the changes in early death rates (in people under 75) between this area and all of England. Early deaths from all causes also show the differences between the most and least deprived quintile (IMD2010) in this area. (Data points are the midpoints of 3 year averages of annual rates, for example 2005 represents the period 2004 to 2006).

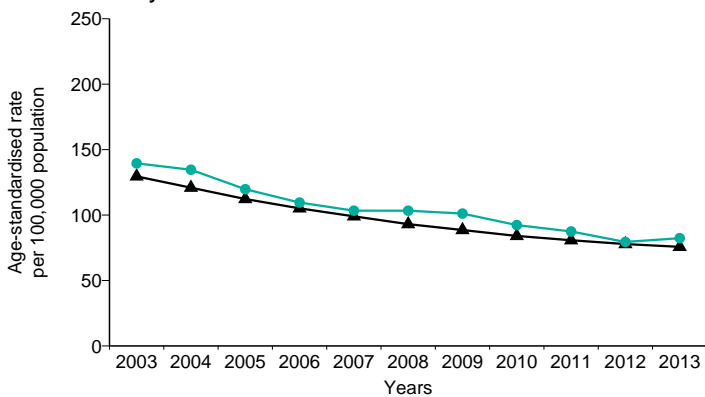
Early deaths from all causes:
MEN



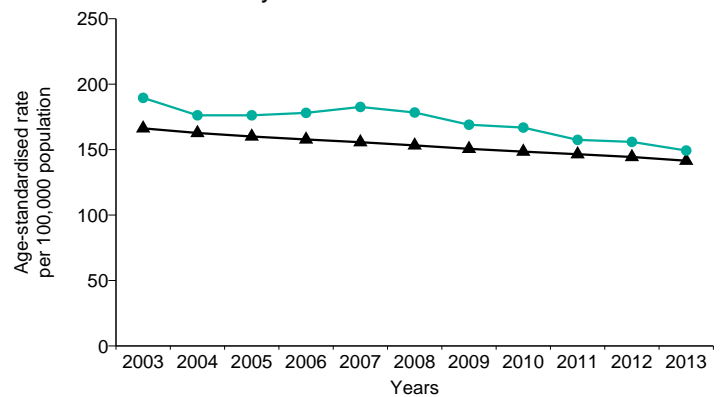
Early deaths from all causes:
WOMEN



Early deaths from heart disease and stroke



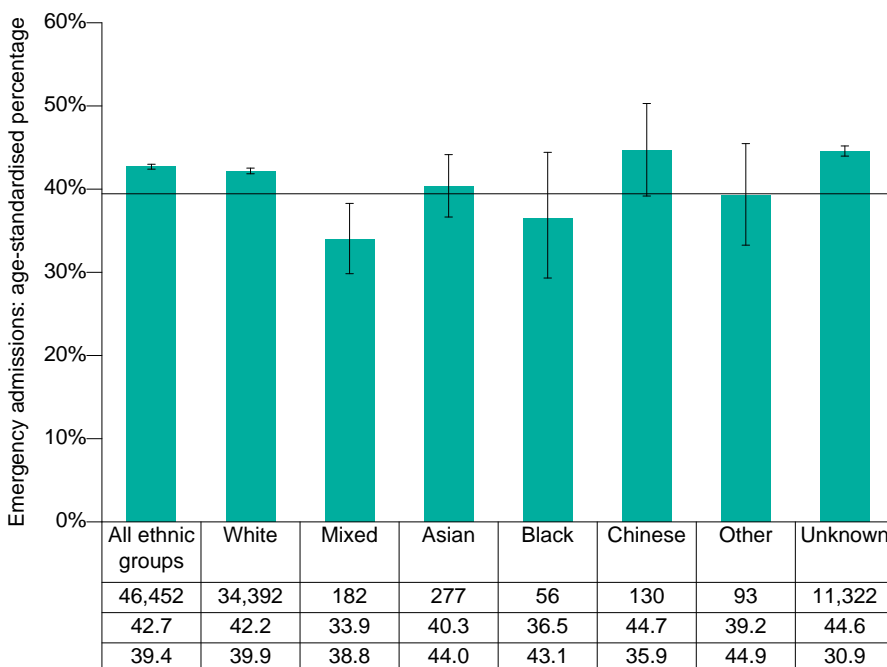
Early deaths from cancer



▲ England average ● Local average ■ Local least deprived ◆ Local most deprived ■ Local inequality

Health inequalities: ethnicity

Percentage of hospital admissions that were emergencies, by ethnic group, 2014/15



This chart shows the percentage of hospital admissions for each ethnic group that were emergencies, rather than planned. A higher percentage of emergency admissions may be caused by higher levels of urgent need for hospital services or lower use of services in the community. Comparing percentages for each ethnic group may help identify inequalities.

■ Wirral
 | 95% confidence interval
 — England average (all ethnic groups)

Figures based on small numbers of admissions have been suppressed to avoid any potential disclosure of information about individuals.

Health summary for Wirral

The chart below shows how the health of people in this area compares with the rest of England. This area's result for each indicator is shown as a circle. The average rate for England is shown by the black line, which is always at the centre of the chart. The range of results for all local areas in England is shown as a grey bar. A red circle means that this area is significantly worse than England for that indicator; however, a green circle may still indicate an important public health problem.

- Significantly worse than England average
- Not significantly different from England average
- Significantly better than England average
- Not compared

Domain	Indicator	Period	Local No total count	Local value	Eng value	Eng worst	England average		Eng best
							Regional average [€]	England Range	
Our communities	1 Deprivation score (IMD 2015) #	2015	n/a	26.9	21.8	42.0			5.0
	2 Children in low income families (under 16s)	2013	13,115	22.5	18.6	34.4			5.9
	3 Statutory homelessness†	2014/15	27	0.2	0.9	7.5			0.1
	4 GCSEs achieved†	2014/15	2,155	61.0	57.3	41.5			76.4
	5 Violent crime (violence offences)	2014/15	3,871	12.1	13.5	31.7			3.4
Children's and young people's health	6 Long term unemployment	2015	868	4.4	4.6	15.7			0.5
	7 Smoking status at time of delivery	2014/15	x ¹	x ¹	11.4	27.2			2.1
	8 Breastfeeding initiation	2014/15	1,793	55.6	74.3	47.2			92.9
	9 Obese children (Year 6)	2014/15	645	19.6	19.1	27.8			9.2
	10 Alcohol-specific hospital stays (under 18)	2012/13 - 14/15	124	61.2	36.6	104.4			10.2
Adults' health and lifestyle	11 Under 18 conceptions	2014	176	30.8	22.8	43.0			5.2
	12 Smoking prevalence in adults†	2015	n/a	18.9	16.9	32.3			7.5
	13 Percentage of physically active adults	2015	n/a	51.5	57.0	44.8			69.8
	14 Excess weight in adults	2012 - 14	n/a	66.2	64.6	74.8			46.0
	15 Cancer diagnosed at early stage #	2014	763	48.3	50.7	36.3			67.2
Disease and poor health	16 Hospital stays for self-harm	2014/15	846	274.2	191.4	629.9			58.9
	17 Hospital stays for alcohol-related harm	2014/15	2,591	819	641	1223			374
	18 Recorded diabetes	2014/15	18,399	6.8	6.4	9.2			3.3
	19 Incidence of TB	2012 - 14	28	2.9	13.5	100.0			0.0
	20 New sexually transmitted infections (STI)	2015	1,869	939	815	3263			191
Life expectancy and causes of death	21 Hip fractures in people aged 65 and over	2014/15	431	593	571	745			361
	22 Life expectancy at birth (Male)	2012 - 14	n/a	78.0	79.5	74.7			83.3
	23 Life expectancy at birth (Female)	2012 - 14	n/a	82.2	83.2	79.8			86.7
	24 Infant mortality†	2012 - 14	44	4.0	4.0	7.2			0.6
	25 Killed and seriously injured on roads	2012 - 14	365	38.0	39.3	119.4			9.9
	26 Suicide rate†	2012 - 14	83	10.2	10.0				
	27 Deaths from drug misuse #	2012 - 14	40	4.3	3.4				
	28 Smoking related deaths	2012 - 14	1,923	320.2	274.8	458.1			152.9
	29 Under 75 mortality rate: cardiovascular	2012 - 14	726	82.3	75.7	135.0			39.3
	30 Under 75 mortality rate: cancer	2012 - 14	1,323	149.3	141.5	195.6			102.9
	31 Excess winter deaths	Aug 2011 - Jul 2014	640	19.3	15.6	31.0			2.3

Indicator notes

1 Index of Multiple Deprivation (IMD) 2015 **2** % children (under 16) in low income families **3** Eligible homeless people not in priority need, crude rate per 1,000 households
4 5 A*-C including English & Maths, % pupils at end of key stage 4 resident in local authority **5** Recorded violence against the person crimes, crude rate per 1,000 population
6 Crude rate per 1,000 population aged 16-64 **7** % of women who smoke at time of delivery **8** % of all mothers who breastfed their babies in the first 48hrs after delivery
9 % school children in Year 6 (age 10-11) **10** Persons under 18 admitted to hospital due to alcohol-specific conditions, crude rate per 100,000 population **11** Under-18 conception rate per 1,000 females aged 15-17 (crude rate) **12** Current smokers, Annual Population Survey (APS) **13** % adults achieving at least 150 mins physical activity per week **14** % adults classified as overweight or obese, Active People Survey **15** Experimental statistics - % of cancers diagnosed at stage 1 or 2 **16** Directly age sex standardised rate per 100,000 population **17** The number of admissions involving an alcohol-related primary diagnosis or an alcohol-related external cause (narrow definition), directly age standardised rate per 100,000 population **18** % people on GP registers with a recorded diagnosis of diabetes **19** Crude rate per 100,000 population **20** All new diagnoses (excluding Chlamydia under age 25), crude rate per 100,000 population **21** Directly age and sex standardised rate of emergency admissions, per 100,000 population aged 65 and over **22, 23** The average number of years a person would expect to live based on contemporary mortality rates **24** Rate of deaths in infants aged <1 year per 1,000 live births **25** Rate per 100,000 population **26** Directly age standardised mortality rate from suicide and injury of undetermined intent per 100,000 population (aged 10+) **27** Directly age standardised rate per 100,000 population **28** Directly age standardised rate per 100,000 population aged 35 and over **29** Directly age standardised rate per 100,000 population aged under 75 **30** Directly age standardised rate per 100,000 population aged under 75 **31** Ratio of excess winter deaths (observed winter deaths minus expected deaths based on non-winter deaths) to average non-winter deaths (three years)

† Indicator has had methodological changes so is not directly comparable with previously released values. € "Regional" refers to the former government regions.

New indicator for Health Profiles 2016. x¹ Value not published for data quality reasons

More information is available at www.healthprofiles.info and <http://fingertips.phe.org.uk/profile/health-profiles>

Please send any enquiries to healthprofiles@phe.gov.uk

You may re-use this information (not including logos) free of charge in any format or medium, under the terms of the Open Government Licence. To view this licence, visit www.nationalarchives.gov.uk/doc/open-government-licence/version/3/